



Eichacker **S**immentals *And* **K**Angus

Bull & Female Sale

JOIN US!

FRIDAY, MARCH 7TH • 1:00 PM
AT THE EICHACKER SIMMENTAL FARM • SALEM, SD

2

0

2

5

WELCOME!

**EICHACKER SIMMENTAL FAMILY**

Bridgett, Becki, Greg
Dana, Amanda, Judy, Haley, Adam, Cathy, Steve, Jordan, Nick
Taylor, Hunter, Andi, Emmitt, Ellie

Another year has come and gone and just like all the other years it has had its ups and downs. We went from drought conditions in early spring to flooding in early summer then back to drought by early fall.

We certainly want to take this opportunity to say THANK YOU for your interest in our cattle operations here at Eichacker Simmentals and JK Angus. We know you can buy your bulls, and good bulls, from a lot of different producers. The other day the mailman dropped off the mail and there were twelve sale catalogs with a big rubber band holding them together in our mailbox, all in one day. Then the Fed-Ex driver pulled in three days in a row to drop off catalogs. So yes, there are many choices, but the bull business is a people business and at the end of the day it's who you want to do business with. And the fact that you are even reading this means more than you'll ever know.

For those that didn't know we'd like to welcome Zac Heumiller back to ES. He had been working here for over 12 years before taking a few years off to experience other work adventures. We are so grateful to have him back as part of the ES crew! And oh my, did we have fun this summer with not one but two weddings. Yes, two of McCook County's most eligible bachelors got married, Billy & Nadine were married in June and Adam and Haley joined hands in August with a fun reception in our shop! Congrats and welcome Nadine & Haley!

Some of you may think Christmas can be a little hectic around the house, but you should walk into a seedstock producers' house at sale catalog time. The office and kitchen table are scattered with computers, pedigrees, weights and measurements, cameras, video camera, pictures, and notebooks full of footnotes. But like a Christmas miracle, as a deadline approaches it all comes together into a beautiful sale catalog.

The world is changing and changing fast in how we evaluate cattle with what DNA has brought to the table in the past five years is unbelievable. There are people who literally sit at their computer and sort their replacement heifers based off the DNA. Don't get me wrong, we still feel there's a lot of cowboy logic that goes in cattle selection but there are other tools available that can help in the process. Like we have for the past few years, we have the RightChoice logo to help find the bulls you're looking for.

**KAPPERMAN FAMILY**

Ross, Rowdy,
Billy, Nadine, Jeff,
Sue, John
Patti, Angie,
Colton, Laura

**RYAN BLAGG****ZAC HEUMILLER**

To really give you something to think about, Top Genomics has another tool available called RightBull, there's a flyer on page 3 in the catalog with more information. In a nutshell we would love to visit with you on this option if you want to take your bull selection to a whole new level.

We had an awesome week of weather at the end of January to picture and video, so the bulls are already videoed, so hopefully they'll be displayed on DV Auction shortly after the catalog goes to print.

We worked with Marty Ropp and Allied Genetics to secure some embryos out of some of the elite donors in the breed to offer some bulls with a few new bloodlines. We hope you enjoy sorting through them as much as we have, there's a lot of information in the footnotes to help you in the selection process. FYI we even put in more embryos last spring.

On that note we want to thank and acknowledge Glen, Kurt, and Heath over at the Kummer Ranch for the dedication and great work they have done as they have been awesome partners for many years.

The sale will once again be a video auction, and videos will be available by mid-February on our website and DV Auction.

The cattle are always available for viewing prior to the sale. The Simmental bulls and heifers are at ES and the Angus bulls are at JK. Each of our operations is only two miles off I-90 but there are fifteen miles between exits.

Thanks again for your interest in our operations, it's not taken lightly. If there's anything we can do, don't hesitate to call. Come early and stay after for some great hospitality.

HOPE TO SEE YOU ON MARCH 7.

Eichacker Simmentals & JK Angus

VIDEOS WILL BE AVAILABLE AT WWW.EICHACKERSIMMENTALS.COM OR WWW.EBERSALE.COM

FRIDAY, MARCH 7, 2025



Friday, March 7, 2025 at 1:00 PM At Eichacker Simmentals, Salem, SD

DIRECTIONS TO SALE SIGHT: Eichacker Simmental Farm, 25446 445th Ave, Salem SD 57058: Exit 368 (Canistota) on Interstate 90, go 2 miles North, Eichacker Farm is on the East side of the road. From Salem: Hwy 81 & 38 intersection, go 4 miles East and 1.5 miles South. Farm is on the East side of the road. Sale facility is on the west side.

SCHEDULE: Cattle may be viewed at the farm any time prior to Friday, March 7, 2025.

Friday, March 7 Cattle on Display at Eichacker Simmentals
Complimentary Lunch Served 11:30 AM
51st Annual Eichacker Simmental Bull & Female Sale **1:00 PM**
Post Sale Hospitality following sale Everyone Welcome!

FEATURING SIMMENTAL & ANGUS BULLS BRED FEMALES & COW/CALF PAIRS

SALE DAY PHONES:

Steve Eichacker 605-421-1152
Adam Eichacker 605-421-0554
Val Eberspacher 612-805-7405
Billy Kapperman 605-940-2504
Ross Hoelker 605-359-5022

LIVE BIDDING AT

DVAuction
Broadcasting Real-Time Auctions

VIDEO AUCTION ON ALL CATTLE!

• No cattle will go through a sale ring •

Motels

Hampton Inn, Mitchell, SD 605-995-1575
Quality Inn & Suites, Sioux Falls, SD 605-336-1900
AmericInn Hartford, Hartford, SD 605-528-5000

Terms of Sale

All cattle will sell under the suggested sale terms and conditions of the American Simmental Association. Terms available sale day.

Announcements

Announcements made sale day and from the block take precedence over printed material in sale catalog. Anyone attending this sale attends at their own risk. Eichacker Simmentals or any of the sale force will not be held responsible for any personal injury while attending this sale.

EPDs

All Simmental bulls and females have genomic enhanced EPDs.

Feeding & Delivery

ES will offer to feed the bulls at no charge until April 15, 2025. JKAngus will offer to feed the bulls at no charge until April 1, 2025. At that time, they will be semen tested and delivered free of charge up to 300 miles. We will assist in making the most economical arrangements possible beyond that. We are not responsible for any injury or death to the bulls while in our care. We would appreciate pick up or delivery arrangements of the bred heifers to be made within a few days of the sale.

Trucking

Craig Kaisand 641-891-9666 • Dick Coleman Trucking, 765-461-0954

Volume Discount

Volume Discount on bulls ONLY: 3 bulls 3%, 4 bulls 4%, 5 or more bulls 5%

Insurance

Insurance will be available, details will be announced sale day. In no case will seller be responsible for more than the purchase price of the bull.

Health

All bulls have been tested negative for BVD/PI. All cows are Johnes free. All genetic defect testing has been completed.

Sale Management

Sale Managed by Eberspacher Enterprises, Inc.
Val & Lori Eberspacher • sales@ebersale.com • www.ebersale.com
EE Office 507-532-6694
Val Eberspacher Cell 612-805-7405

Auctioneer

Col. Tracy Harl 402-461-3575

Marketing Representatives

Val Eberspacher, EE Sales 612-805-7405
Jim Scheel, Special Assignment 605-545-1521
Randy Rasby, American Cattleman 308-539-6195
Jeff Kapperman, Tri-State Neighbor 605-940-5104
Kent Snowden, Tri State Neighbor 402-640-2377
Dustin Carter, Special Assignment 712-898-9972
Chris Effling, Special Assignment 605-769-0142
Kadon Leddy, Cattle Business Weekly 605-924-0757
Marty Ropp, Allied Genetics 406-581-7835
Tom Hook, Allied Genetics 507-829-5283
Jeremie Ruble, Special Assignment 406-581-7940
Ken Odde, ASA Representative 605-848-4479
Justin Dikoff, DV Auction 605-290-0635

Calving Ease Score ★ ★ ★ ★

We have put a column in with a CE Score with 1, 2, 3 or 4 stars. 1 star being harder calving and 4 stars being the easiest caving. It is just our opinion of what you could expect taking into consideration the BW, EPDs, pedigree and structure of the bull.

Semen Interest

Eichacker Simmentals will retain ¼ revenue sharing semen interest in all ES bulls selling and JK Angus will retain 1/3 revenue sharing semen interest in all JK bulls selling. This means if we would like to collect semen on the bull for our own use, we would have the option to do so. Also, if semen is sold ES would retain ¼ revenue from the ES bulls and JK would retain 1/3 revenue from the JK bulls. The new owners of the bulls will have full possession and full salvage value.

Adjusted Scrotal – Simmental Bulls

Actual scrotal measurements were taken on 1/27/25, then adjusted to a year of age using each breed's own formula for adjusted scrotal measurements.

Weight Per Day of Age (WDA) – Simmental Bulls

WDA is the weight of a bull on 1/27/25 divided by the days of age.

130 Day Weight (PWG) – Simmental Bulls

The 130 day gain was the average daily gain from the weaning weight until 1/27/25.

Guest Breeder: JK Angus – Billy Kapperman 605-940-2504 – Ross Hoefker 605-359-5022
Jeff & Sue Kapperman 605-940-5104

Improved Buying Confidence with Greater Genomic **ASSURANCE**

Access to more and better information has always been key to making wise decisions. The evolution and improvement of genetic evaluation tools too has given us an ever-clearer picture of the true genetic makeup of cattle and thus a better view of the value proposition. RightMate, powered by Top Genomics LLC is taking the evaluation of genetics and genomics one giant step further. By combining specific genomic information with the long-proven value of EPDs, this new advancement in technology improves our depth and precision when evaluating the actual ability to transmit value and profit.

The 3 Accreditation Logos below are designed to simplify bull selection and improve buyer confidence by more accurately describing the genetics offered and by reducing risk. What this means to you as a customer is a much greater assurance that you are getting both what you want and need from the genetics you purchase. What it means to your seedstock provider is access to RightMate technology that simply sets them apart from the rest of the industry.



ACCREDITED GENOMIC PLUS – For the majority of producers who simply need consistent and balanced genetic improvement, without genomic setbacks, G+ Accredited bulls should be on your list for premium purchase. These sires will absolutely move you forward for both cost reduction and income producing traits and substantially reduce risk when compared to all other evaluation programs. It's simple, the right genes are in these bulls to help secure a profitable future and they have great EPDs to match!



ACCREDITED CALVING EASE – Simply find bulls with the ACE logo for third party Accredited, secure Calving Ease bulls. Though we have had tools in the past to assist in choosing heifer bulls, we've never had one nearly this effective. The reduced risk that comes with this genomic certification will simply make your decisions easier and your heifer calving season more successful. Purchase special purpose ACE bulls with confidence. They will deliver consistent and predictable calving ease.



ACCREDITED TERMINAL MATE – Just like an ATM machine makes it simpler to access your cash, the ATM Logo highlights bulls accredited to generate extra cash income as soon as your next calf crop! These bulls are meant specifically to use only on mature cows and for the purpose of adding performance, pay weight and end product value to market.

MARTY ROPP 406-581-7835

RightMate
powered by TOP GENOMICS

RightBull

powered by  TOP GENOMICS

Precision genomic selection tools **FOR THE FUTURE** of commercial beef production

Many of you have seen the unprecedented results created by the RightMate and RightChoice tools for precision matings in the beef genetics industry. Now, Top Genomics offers tools that use the same, cutting-edge technologies, but in a format that is better suited to the way most commercial herds breed cows.

With a genomic snap-shot of your commercial cow herd, it is possible to sort a group of sale bulls or AI candidates to best match your particular situation and wishes. RightBull provides substantially more insurance of success than just paging through a catalog or walking from pen to pen. Ultimately, you make the decisions from the prescribed short list based on the traits and factors you prioritize.

Additional Options

- Choosing ideal heifer bulls is great strength of the RightBull and RightMate technologies.
- Top Genomics can sort females in your herd into more similar groups making bull turn out more precise.
- Genomically sort the cow herd into desired outcome groups, then prescribe special purpose bulls.
- RightBull is also available for seedstock providers wishing to purchase genetics.

The PROCESS

- 1** Access, if genotypes are currently available, or genotype a minimum of 25% of the existing cow herd (25 head minimum in cow herds <100). This minimum percentage may differ slightly depending on group sizes and total females to mate, but the more females genotyped the more accurate the evaluation. For some this will be a decision to genotype the entire herd or at least all of the young females. The information delivered to Top Genomics must be in the form of raw genotypes and not genomic scores (please contact Allied for questions) in order to get the core information needed for RightBull.
- 2** Get permission from your seedstock provider to access to the bull genotypes and EPDs, then transfer that information along with the genotypes of the cow herd to Dr. Mahdi Saatchi at Top Genomics, LLC. If he already has those genotypes, this process is even easier.
- 3** Participate in a conversation with staff regarding your mating plans and breeding objectives so that the results can be better customized to your management practices and genetic goals.
- 4** Top Genomics will provide you a RightBull ranking and %Genomic Match for bulls in that particular offering for you to use as an important "first sort" in preparation for purchase.
- 5** Please allow 5-8 weeks from the time you collect DNA samples to expect results, but just 2 weeks for the RightBull evaluations to be completed if your cow's genotypes are already available.

MARTY ROPP 406-581-7835

RightBull
powered by  TOP GENOMICS



- These DNA programs have been moving like the speed of light! It started out with Genomic Enhanced EPD's which entailed having DNA sent in on each animal and getting back Genomic Enhanced EPD's, that in many cases was the equivalent of the animal having 15-20 progeny sent in. ASA then produced the Cow Herd Roundup to have entire cowherds done. Then a few years after that the Calf Crop Genomics was the next logical program ASA initiated.
- We then incorporated the RightMate program where through genomics they told us which bull through AI was the best choice to breed that particular cow to. At about that same time we incorporated the RightChoice program which is the 3 logos G+, ACE & ATM by each lot that helps with the selection process for you, the buyer, to get the right bull for your herd.
- For those out there that want to take the bull selection process to a whole new level, we can now offer the RightBull selection tool. It involves collecting DNA on 25% of your cow herd. Then knowing the genotype makeup of your cow herd you would have a conversation with the Allied staff to see what your goals are. With your data and goals in mind they would run a match with our bulls in the catalog as they already have genotypes on file and you would end up with a list in order on which bulls are the best fit for your cows. If you ask me, it makes the bull selection process quite simple. Once you have the DNA on file, there are other tools available also. You could sort your opens for which ones make the most sense to retain, or sort your cow herd to go to different pastures with like genotypes to match a certain bull.
- If you have any interest whatsoever in moving your program in this direction, we'd love to have the conversation because yes, it does come with some cost but that's where we at ES are willing to step in and help you out.
- **LET'S VISIT!**

SONS OF LCDR DILIGENCE 215J



1 ES MH129-6



CE SCORE
★★★

CE	BW	WW	YW	ADG	MCE	Milk	MWW	Stay	DOC	CW	YG	Marb	BF	REA	API	TI
12	2.4	101	153	0.33	6	26	76	18	17.5	33.2	-0.08	0.39	-0.19	0.43	155	97
		3	4	10		30	5	30	3	35		20			20	10

REG#4414113 • BD: 2/6/24 • Homo Black Homo Polled Purebred SM

Adj BW	Adj WW	Adj YW
91 ET	693	1377
Adj Scrotal	WDA	130 Day Gain
38	3.71	4.29

Pedigree for Lots 1-6:
LCDR Favor 149F
LCDR Diligence 215J
LCDR Ms Gia 5G
WS Proclamation E202
ES H129
ES A110

6 Full Brothers



2 ES MH129-5



CE SCORE
★★★★

CE	BW	WW	YW	ADG	MCE	Milk	MWW	Stay	DOC	CW	YG	Marb	BF	REA	API	TI
14	0.5	97	151	0.34	8	26	74	17	16.5	42.9	-0.07	0.62	-0.13	0.54	173	103
		20	35	10	5	10	25	30	10	30	10	15		5	5	3

REG#4414137
BD: 2/9/24

Homo Black
Homo Polled
Purebred SM

Adj BW	Adj WW	Adj YW
83 ET	763	1340
Adj Scrotal	WDA	130 Day Gain
39.7	3.68	3.62

- I suspect the commercial guys to be two deep in the pens where the six flush brothers are going to be standing. After spending a few hours in the bull pen the other day there was definitely a WOW factor after finding these six brothers. If you're looking for bulls to add a little size and length to a set of calves, take one or take them all, you can't go wrong. It's an old cliché but I do recommend watching their videos as we feel the bulls are better than their pictures
- Their dam, H129, made a big splash last year with her flush of CLRS Homeland sons, they were an awesome trio of bulls going to Barry Olson, Jerry Hink and Pete Bakken, then on the heifer side, check out ES L150 (Lot 136) in the heifer division. I'm pretty sure we'll be hearing more from H129 in the future

3 ES MH129-4

CE SCORE



Adj BW	Adj WW	Adj YW
91 ET	726	1184
Adj Scrotal	WDA	130 Day Gain
36.8	3.29	2.88

CE	BW	WW	YW	ADG	MCE	Milk	MWW	Stay	DOC	CW	YG	Marb	BF	REA	API	TI
11	0.0	93	144	0.32	6	26	72	19	15.7	35.4	-0.12	0.47	-0.016	0.60	163	97
30	10	10	15			30	15	20	10	30		15			15	10

REG#4414151 • BD: 2/11/24 • **Homo Black Baldy Homo Polled Purebred SM**

ES LH129-3, Maternal Brother

- The H129 cow is just making her mark as a possible replacement for the A110 cow who has definitely left an impact on our place. She has a tremendous amount of body and near perfect in terms of structure, feet and udder design
- On the genomic side their BW & CE EPD's are certainly acceptable for cows, but their WW & YW #'s put them over the top, keep the females and if you need to add marbling, these boys cover that also and their API & TI indexes are all very acceptable also

4 ES MH129-3

CE SCORE



CE	BW	WW	YW	ADG	MCE	Milk	MWW	Stay	DOC	CW	YG	Marb	BF	REA	API	TI
10	2.1	101	154	0.33	5	26	76	15	16.2	40.4	-0.27	0.37	-0.043	0.91	150	97
3	4	10				30	5		10	20		25			30	10

REG#4414100
BD: 2/3/24**Homo Black Baldy**
Homo Polled
Purebred SM

Adj BW	Adj WW	Adj YW
85 ET	661	1237
Adj Scrotal	WDA	130 Day Gain
38.3	3.36	3.62

**5 ES MH129-1**

CE SCORE



CE	BW	WW	YW	ADG	MCE	Milk	MWW	Stay	DOC	CW	YG	Marb	BF	REA	API	TI
13	0.4	100	151	0.32	7	26	75	18	14.6	35.5	-0.15	0.45	-0.022	0.65	164	101
30	35	4	5	15	35	30	10	30	20	30		15			15	4

REG#4414128
BD: 2/8/24**Homo Black**
Homo Polled
Purebred SM

Adj BW	Adj WW	Adj YW
69 ET	733	1289
Adj Scrotal	WDA	130 Day Gain
38.6	3.55	3.50



6

ES MH129-2

CE SCORE

★★★★

LCDR Favor 149F
 LCDR Diligence 215J
 LCDR Ms Gia 5G
 WS Proclamation E202
 ES H129
 ES A110

CE	BW	WW	YW	ADG	MCE	Milk	MWW	Stay	DOC	CW	YG	Marb	BF	REA	API	TI
13	0.0	89	139	0.31	7	26	70	18	17.5	38.3	-0.02	0.56	-0.005	0.40	167	97
35	30	20	15	15		30	20	25	3	25		10			10	10

REG#4414153 • BD: 2/12/24 • Homo Black Homo Polled Purebred SM

Adj BW	Adj WW	Adj YW
81 ET	623	1059
Adj Scrotal	WDA	130 Day Gain
32.8	2.93	2.74



**FULL
 BROTHER
 TO LOTS
 1-5
 ...
 SONS OF
 LCDR
 DILIGENCE
 215J**

7

ES MH100

CE SCORE

★★★

LCDR Favor 149F
 LCDR Diligence 215J
 LCDR Ms Gia 5G
 BCLR Cash Flow C820
 ES H100
 ES B19

CE	BW	WW	YW	ADG	MCE	Milk	MWW	Stay	DOC	CW	YG	Marb	BF	REA	API	TI
9	2.2	108	170	0.39	4	18	72	18	17.3	56.8	-0.26	0.34	-0.035	1.13	156	100
	1	1	2			15	25	4	2		25			10	20	4

REG#4414335 • BD: 4/7/24 • Homo Black Homo Polled Purebred SM

Adj BW	Adj WW	Adj YW
97	639	1314
Adj Scrotal	WDA	130 Day Gain
37.3	3.71	4.25



- The bull hit me pretty hard the other day, then when we sat down with the data I see why. He's the #3 bull for PWG and #4 for WDA and has WW & YW EPD's that rank him in the top 1% of the breed
- All of that performance is coming from the top and bottom side of the pedigree, both the sire and dam are in the top 1% & 2% for WW & YW
- Sometimes when you talk about all of that performance it comes in an ugly package, but that's not the case here. He's got a great top and hip but keeps it pretty neat and tidy on the front 1/3



ES K58, Maternal Sister

BRIDLE BIT MISS J129



SIMMENTAL BULLS

SONS OF JC MR PONTIAC D114K

8

ES MJ129-2



CE SCORE



Gibbs 9114G Essential
JC Mr Pontiac D114K
FSCR D114 Lucille B089XP
KBHR Cimarron F151
Bridle Bit Miss J129
Bridle Bit Miss B452

Adj BW	Adj WW	Adj YW
84 ET	589	1217
Adj Scrotal	WDA	130 Day Gain
35.0	3.27	3.95

CE	BW	WW	YW	ADG	MCE	Milk	MWW	Stay	DOC	CW	YG	Marb	BF	REA	API	TI
10	1.8	91	146	0.34	6	24	69	16	11.8	51.4	-0.41	0.42	-0.085	1.14	153	94
		15	10	10			25			4		20	30	10	25	15

REG#4414111 • BD: 2/6/24 • **Homo Black Homo Polled Purebred SM**

- Back in 2022 Chad Cook offered a select group of opens for sale in their production sale. We couldn't resist the opportunity to tie into one of his most prolific cow families, the B452 cow. The mother of these three bulls, J129 is B452's natural calf by KBHR Cimarron. The B452 cow is the mother of Bridle Bit Resource who is the sire of the Recharge bull working for CK Cattle. To muddy the water a little more, the J129 cow and the dam of another flush of bull in the sale, G9107 are maternal sisters. So quite honestly there's a segment of this sale that's just like being in Walsh, Colorado
- There are definitely some differences in the three bulls both genotypically and phenotypically and what we see matches the paper pretty well in my opinion. We gave the MJ129-1 (Lot 10) 4 stars for CE with his -5.4 BW EPD. With the other two bulls being the performance bulls of the trio. The MJ129-2 (Lot 8) even has the 6th heaviest PWG
- As the calves were raised at our cooperator herd at Glen Kummer's I have no explanation for the Adj WW's as I don't know the recip cow situation, so we always feel it's more accurate to go back to their EPD's as these have all been DNA tested and are genomically enhanced EPD's



9 ES MJ129-3

CE	BW	WW	YW	ADG	MCE	Milk	MWW	Stay	DOC	CW	YG	Marb	BF	REA	API	TI
12	-1.0	77	123	0.29	7	24	62	21	13.5	31.7	-0.34	0.38	-0.042	1.02	161	88
15				25	25			10	30			25		20	15	30

CE SCORE
★★★★★

Gibbs 9114G Essential
JC Mr Pontiac D114K
FSCR D114 Lucille B089XP
KBHR Cimarron F151
Bridle Bit Miss J129
Bridle Bit Miss B452

Adj BW	Adj WW	Adj YW
81 ET	624	1196
Adj Scrotal	WDA	130 Day Gain
37.3	3.25	3.60

REG#4414122 • BD: 2/7/24 • Homo Black Homo Polled Purebred SM



Bridle Bit Miss J129, Dam

10 ES MJ129-1

CE	BW	WW	YW	ADG	MCE	Milk	MWW	Stay	DOC	CW	YG	Marb	BF	REA	API	TI
15	-5.4	63	95	0.20	10	24	55	24	9.4	26.0	-0.34	0.42	-0.055	0.85	174	85
15	1				10			1				20			5	35

CE SCORE
★★★★★

Gibbs 9114G Essential
JC Mr Pontiac D114K
FSCR D114 Lucille B089XP
KBHR Cimarron F151
Bridle Bit Miss J129
Bridle Bit Miss B452

Adj BW	Adj WW	Adj YW
63 ET	671	1090
Adj Scrotal	WDA	130 Day Gain
34.5	3.04	2.65

REG#4414117 • BD: 2/7/24 • Homo Black Homo Polled Purebred SM



SONS OF
JC MR
PONTIAC
D114K

Full
Brothers

11 ES ME59

CE SCORE



Gibbs 9114G Essential
JC Mr Pontiac D114K
FSCR D114 Lucille B089XP
TJ Power Grid 363Y
ES E59
ES A13

Adj BW	Adj WW	Adj YW
71	582	1114
Adj Scrotal	WDA	130 Day Gain
34.3	3.14	3.35

CE	BW	WW	YW	ADG	MCE	Milk	MWW	Stay	DOC	CW	YG	Marb	BF	REA	API	TI
17	-3.5	63	98	0.22	11	24	55	24	13.1	26.5	-0.21	0.35	-0.026	0.68	158	77
10	10			5				1							20	

REG#4414252 • BD: 3/11/24 • **Homo Black Baldy Homo Polled 3/4 SM 1/4 AN**

- He's a moderate sized bull that has a real cool look
- A smaller head that blends into his shoulder awfully nice, looks to be a real trouble-free package with his -3.5 lb BW EPD and CE & BW EPD's that rank him in the top 10% of the breed
- Has a stayability EPD that ranks him in the top 1% of the breed



ES JE59, Maternal Brother



11

12 ES MG163

CE SCORE



CE	BW	WW	YW	ADG	MCE	Milk	MWW	Stay	DOC	CW	YG	Marb	BF	REA	API	TI
13	-0.1	78	116	0.24	6	21	60	19	11.5	30.0	-0.18	0.36	-0.030	0.60	141	81
								15								

REG#4414314
BD: 3/29/24

Homo Black
Homo Polled
5/8 SM 3/8 AN

Gibbs 9114G Essential
JC Mr Pontiac D114K
FSCR D114 Lucille B089XP
B C Lookout 7024
ES G163
Franks/MPC Night Dreams

Adj BW	Adj WW	Adj YW
87	671	1178
Adj Scrotal	WDA	130 Day Gain
35.8	3.37	3.20

- He's not the biggest bull in the pen but I physically cannot pick him apart, he is really complete with a nice CE look
- His sire is on his maiden voyage with his first calf crop just hitting the auction blocks around the country this spring
- His six year old dam got a 9+ on udder score a few years ago and has a WW ratio of 102 on four calves



ES LG163, Maternal Brother



12

13 ES MD121

CE SCORE



CE	BW	WW	YW	ADG	MCE	Milk	MWW	Stay	DOC	CW	YG	Marb	BF	REA	API	TI
14	-1.6	80	127	0.29	9	23	63	20	10.0	47.8	-0.15	0.54	-0.015	0.84	158	89
	25		35		25			10		20		30		25	20	25

REG#4414209
BD: 3/5/24

Homo Black
Homo Polled
5/8 SM 3/8 AN

Gibbs 9114G Essential
JC Mr Pontiac D114K
FSCR D114 Lucille B089XP
W/C United 956Y
ES D121
Hook's Whoopi 68W

Adj BW	Adj WW	Adj YW
89	688	1226
Adj Scrotal	WDA	130 Day Gain
36	3.45	3.38

- A real common-sense bull that probably doesn't excel in any one category but has no holes either, great beef bull
- Boasts some WW & YW ratios of 107 and 105
- Keep the females here as it's a nice maternal package with the cow side getting high marks for udder quality each year



ES LD121, Maternal Brother



13

SONS OF CLRS KING JAMES 616K

Lots 14-17 Full Brothers



14 ES MG9107-1



CE SCORE



CE	BW	WW	YW	ADG	MCE	Milk	MWW	Stay	DOC	CW	YG	Marb	BF	REA	API	TI
13	0.9	93	147	0.33	6	26	73	20	13.1	56.8	-0.32	0.65	-0.070	1.06	176	102
		10	10	10		30	15	15	35	2		4		15	4	3

REG#4414228 • BD: 3/8/24 • **Homo Black Homo Polled Purebred SM**

LBRS Genesis G69
CLRS King James 616K
CLRS Dora 616D
Hook's Encore 65E
Bridle Bit Miss G9107
Bridle Bit Miss B452

Adj BW	Adj WW	Adj YW
95 ET	698	1314
Adj Scrotal	WDA	130 Day Gain
36.7	3.65	3.87

- There's a lot of time, thought, and money goes into raising embryo calves but when you get a flush like this you just nod your head and say, "it's worth it". Their dam is a powerhouse full sister to the ever-popular Bridle Bit Resource bull. The maternal pieces are all there and her phenotype is near ideal. She is deep sided, easy fleshing and great footed
- It doesn't happen often, but we put in seven embryos and got seven calves, the four bulls are here for your appraisal and the three heifers are in the replacement pen. I admit there is one of these bulls I think is pretty special. There are some differences so I'm not going to say which one I like as everyone looks at cattle a little differently and may gravitate a different direction
- These boys are top shelf when it comes to their genomic profiles. There are some differences, a couple offer a little more CE and a couple have a lot more growth. When it comes to maternal, stay, docility, they will all work and marbling, API, and TI they are all in the top 5% of the breed. Genomically they are very uniform. Two of the individuals are even in the top 10 bulls for WDA

15 ES MG9107-2

CE SCORE



LBRS Genesis G69
CLRS King James 616K
CLRS Dora 616D
Hook's Encore 65E
Bridle Bit Miss G9107
Bridle Bit Miss B452

Adj BW	Adj WW	Adj YW
95 ET	722	1308
Adj Scrotal	WDA	130 Day Gain
41.2	3.64	3.68

CE	BW	WW	YW	ADG	MCE	Milk	MWW	Stay	DOC	CW	YG	Marb	BF	REA	API	TI
13	1.5	94	148	0.33	6	26	73	20	15.6	45.4	-0.27	0.91	-0.036	1.04	192	109
35	10	10	10	10		30	10	10	10	10		1		20	1	1

REG#4414241 • BD: 3/9/24 • **Homo Black Homo Polled Purebred SM**

15

16 ES MG9107-3

CE SCORE



CE	BW	WW	YW	ADG	MCE	Milk	MWW	Stay	DOC	CW	YG	Marb	BF	REA	API	TI
14	-0.6	85	133	0.30	8	26	69	18	14.4	41.1	-0.25	0.88	-0.048	0.81	187	105
20	20	30	25	20	25	30	25	20	20	20		1			2	2

REG#4414260
BD: 3/11/24**Homo Black
Homo Polled
Purebred SM**

LBRS Genesis G69
CLRS King James 616K
CLRS Dora 616D
Hook's Encore 65E
Bridle Bit Miss G9107
Bridle Bit Miss B452

Adj BW	Adj WW	Adj YW
94 ET	631	1169
Adj Scrotal	WDA	130 Day Gain
37.3	3.26	3.38



16

17 ES MG9107-4

CE SCORE



CE	BW	WW	YW	ADG	MCE	Milk	MWW	Stay	DOC	CW	YG	Marb	BF	REA	API	TI
15	-2.5	79	120	0.26	8	26	65	25	15.7	29.0	-0.24	0.88	-0.032	0.75	201	103
15	5			20	30			1	10			1			1	3

REG#4414255
BD: 3/11/24**Homo Black
Homo Polled
Purebred SM**

LBRS Genesis G69
CLRS King James 616K
CLRS Dora 616D
Hook's Encore 65E
Bridle Bit Miss G9107
Bridle Bit Miss B452

Adj BW	Adj WW	Adj YW
77 ET	622	1123
Adj Scrotal	WDA	130 Day Gain
36.8	3.14	3.16



17

18 ES M94F-1

CE SCORE

★★★

HHS Mr Entourage 867B
 LCDR Reserve 210J
 LCDR Ms Echo 43E
 Hook's Beacon 56B
 Hook's Fantasia 94F
 Hook's Celebrity 19C

CE	BW	WW	YW	ADG	MCE	Milk	MWW	Stay	DOC	CW	YG	Marb	BF	REA	API	TI
16	-0.9	78	128	0.31	10	29	68	18	15.2	33.8	-0.33	0.56	-0.053	0.94	170	94
10	15		30	15	4	15	25	30	15	35		10		35	10	15

REG#4414083 • BD: 1/23/24 • **Homo Black Homo Polled Purebred SM**

18

SONS OF LCDR RESERVE 210J

*Full
Brothers*

Adj BW	Adj WW	Adj YW
59 ET	538	1112
Adj Scrotal	WDA	130 Day Gain
34	2.95	3.61

19 ES M94F-2

CE SCORE

★★★

HHS Mr Entourage 867B
 LCDR Reserve 210J
 LCDR Ms Echo 43E
 Hook's Beacon 56B
 Hook's Fantasia 94F
 Hook's Celebrity 19C

CE	BW	WW	YW	ADG	MCE	Milk	MWW	Stay	DOC	CW	YG	Marb	BF	REA	API	TI
13	-1.6	80	124	0.28	8	29	69	18	13.5	27.9	-0.34	0.54	-0.048	0.92	167	95
30	10		35	30	15	15	25	25	30			10		10	15	

REG#4414091 • BD: 1/26/24 • **Homo Black Baldy Homo Polled Purebred SM**

19

Adj BW	Adj WW	Adj YW
65 ET	561	1129
Adj Scrotal	WDA	130 Day Gain
36.4	3.01	3.57

- I'll be the first to admit you'd never guess these two bulls to be full brothers. M94F-1 (Lot 18) is a little more moderate and super stout and thick. Holy crap can he turn a few heads when he steps onto the dance floor, he is one cool looking dude, kind of like the Fonzy on Happy Days
- The other brother M94F-2 (Lot 19) is a bigger framed stretchy bull that carries a cool baldy face. Both have birthweights that are in the 60lb range and a set of EPD's that are well balanced across the board
- Their dam is the 94F cow that was claimed to be one of the best Beacon daughters to come out of the Hook program, and they had a lot of them. She now resides at JC Simmentals in Michigan, and we had just purchased a few embryos

SONS OF LBRS GENESIS G69

20 ES M94F-4



WS Proclamation E202
LBRS Genesis G69
LBR Diana D69
Hook's Beacon 56B
Hook's Fantasia 94F
Hook's Celebrity 19C

Adj BW	Adj WW	Adj YW
91 ET	585	1147
Adj Scrotal	WDA	130 Day Gain
37.6	3.13	3.53

CE	BW	WW	YW	ADG	MCE	Milk	MWW	Stay	DOC	CW	YG	Marb	BF	REA	API	TI
11	2.1	92	141	0.30	6	32	78	18	13.0	61.9	-0.27	0.86	-0.049	1.12	179	105
		15	15	20		5	3	25	35	1		1		10	3	2

REG#4414173 • BD: 2/18/24 • Homo Black Homo Polled Purebred SM

- In our search to bring in some new cow families to offer some fresh genetics the 94F cow was strongly recommended as some feel she is one of the best Beacon daughters to surface. So, we bought two sets of embryos out of her, LCDR Reserve and this group the LBRS Genesis
- When it comes to maternal and carcass especially marbling, these guys are top shelf. They also have API's and TI in the top 5% of the breed
- Full sib brothers have led off John Miller's bull sale in Michigan and a full sister, June 24J, is now in the donor pen



20

21 ES M94F-3



WS Proclamation E202
LBRS Genesis G69
LBR Diana D69
Hook's Beacon 56B
Hook's Fantasia 94F
Hook's Celebrity 19C

Adj BW	Adj WW	Adj YW
87 ET	662	1177
Adj Scrotal	WDA	130 Day Gain
38.4	3.23	3.24

CE	BW	WW	YW	ADG	MCE	Milk	MWW	Stay	DOC	CW	YG	Marb	BF	REA	API	TI
12	-0.1	86	131	0.29	6	32	75	19	15.3	36.1	-0.32	0.71	-0.055	0.92	175	101
		25	30	25		5	10	20	15	30		3			5	4

REG#4414164
BD: 2/14/24

Homo Black
Homo Polled
Purebred SM



21

22 ES M94F-6



WS Proclamation E202
LBRS Genesis G69
LBR Diana D69
Hook's Beacon 56B
Hook's Fantasia 94F
Hook's Celebrity 19C

Adj BW	Adj WW	Adj YW
59 ET	560	1003
Adj Scrotal	WDA	130 Day Gain
35.8	2.75	2.79

CE	BW	WW	YW	ADG	MCE	Milk	MWW	Stay	DOC	CW	YG	Marb	BF	REA	API	TI
13	-1.4	79	123	0.27	7	32	72	20	14.0	39.4	-0.35	0.77	-0.062	0.98	182	100
		35		35		5	15	15	25	20		2		25	3	5

REG#4414116
BD: 2/7/24

Homo Black
Homo Polled
Purebred SM

Lots 20-22
Full Brothers

SONS OF ES ALL BEEF F113



ES J39, Full Sister to Lots 23, 24, 25, 135-135C

- When you have a flush like this where the bulls are all in the bull pen and the four heifer mates are like peas in a pod is what makes what we do worth it all
- We feel these three herd sire candidates have a boat load of potential. I'll be the 1st to say, they're not identical, there is some differences especially after the genomic enhanced EPD's came back. The F113-1 and F113-2 are a tic bigger framed with the F113-3 still very good in his type and kind
- The amazing part is to have all of the power and performance these three have, yet only have BWs of 68, 68 and 74 lbs
- The real story here is their amazing dam, the F113 cow, she is the natural calf of a bred heifer, 6096D, that Marty Ropp had found at Cow Camp back in 2018 and asked if we wanted to partner on her, which we did. The F113 was her natural calf. The F113 cow grew up to be a spitting image of her mother, just a tic bigger. Tremendously easy keeping on a great set of feet and legs and they both have udders that are pretty close to perfect as far as we are concerned. Flash forwards a few years to our production sale in 2023 when Jared Seinola of Five Star Ranch had a bid off with Tom Hook and ended up with the high selling bred heifer, ES J39, for \$23,000. She had that beautiful udder much like her mother and granddam. When Jared purchased J39 she had a Progressive bull calf along side which he sold in the next spring's bull sale and commanded \$35,000. At the time of this writing their 2025 sale is six days away and I believe there are six more 1/2 brothers that will be getting their fair share of attention
- These bulls are powerful, but I truly feel their real value will be the replacement females they will sire for years to come. Be sure to check out the pen with the pick of the four full sisters and you'll get a feel for what we are thinking, and the plan is to have their dam F113 on display with them also

23 ES MF113-1

CE SCORE



WS Proclamation E202

LBRS Genesis G69

LBR Diana D69

ES DZ3

ES/All Beef F113

CCR Ms 0056 Cwboy 6096D

Adj BW	Adj WW	Adj YW
73 ET	742	1342
Adj Scrotal	WDA	130 Day Gain
41	3.70	3.78

CE	BW	WW	YW	ADG	MCE	Milk	MWW	Stay	DOC	CW	YG	Marb	BF	REA	API	TI
13	-0.6	86	136	0.31	6	26	69	15	16.3	38.6	-0.11	0.69	-0.023	0.55	156	95
		25	25	30		35	25		10			15			20	10

REG#4414169 • BD: 2/15/24 • **Homo Black Homo Polled 3/4 SM 1/4 AN**

23

24 ES MF113-2

CE SCORE



WS Proclamation E202

LBRS Genesis G69

LBR Diana D69

ES DZ3

ES/All Beef F113

CCR Ms 0056 Cwboy 6096D

CE	BW	WW	YW	ADG	MCE	Milk	MWW	Stay	DOC	CW	YG	Marb	BF	REA	API	TI
14	1.1	89	144	0.35	6	26	70	16	15.2	36.3	-0.09	0.61	-0.021	0.46	155	93
		15	15	10		35	20	35	20			20			20	15

REG#4414126
BD: 2/8/24**Homo Black**
Homo Polled
3/4 SM 1/4 AN

WS Proclamation E202
LBRS Genesis G69
LBR Diana D69
ES DZ3
ES/All Beef F113
CCR Ms 0056 Cwboy 6096D

Adj BW	Adj WW	Adj YW
67 ET	688	1277
Adj Scrotal	WDA	130 Day Gain
40.1	3.50	3.71



24

25 ES MF113-3

CE SCORE



WS Proclamation E202

LBRS Genesis G69

LBR Diana D69

ES DZ3

ES/All Beef F113

CCR Ms 0056 Cwboy 6096D

CE	BW	WW	YW	ADG	MCE	Milk	MWW	Stay	DOC	CW	YG	Marb	BF	REA	API	TI
14	-0.1	87	139	0.32	6	26	70	13	14.4	38.5	-0.10	0.53	-0.030	0.47	144	92
		20	20	25		35	20	25				30			35	20

REG#4414156
BD: 2/13/24**Homo Black**
Homo Polled
3/4 SM 1/4 AN

WS Proclamation E202
LBRS Genesis G69
LBR Diana D69
ES DZ3
ES/All Beef F113
CCR Ms 0056 Cwboy 6096D

Adj BW	Adj WW	Adj YW
67 ET	582	1136
Adj Scrotal	WDA	130 Day Gain
38.9	3.11	3.50



25



26

ES MF113



CE SCORE

★★★★★

CE	BW	WW	YW	ADG	MCE	Milk	MWW	Stay	DOC	CW	YG	Marb	BF	REA	API	TI
21	-4.2	58	99	0.26	13	26	55	22	12.7	9.5	-0.17	0.46	-0.033	0.28	165	79
1	4				1	30		2							10	

REG#4414306
BD: 3/26/24

Homo Black
Homo Polled
3/4 SM 1/4 AN

WS Proclamation E202
KBHR Global J138
Bar CK Ms X38 106Z
ES DZ3
ES/All Beef F113
CCR Ms 0056 Cwboy 6096D

Adj BW	Adj WW	Adj YW
73	608	1103
Adj Scrotal	WDA	130 Day Gain
36.1	3.14	3.12

- A unique opportunity for a royally bred heifer bull, the natural calf out of the F113 cow, the mother of the pick of the Genesis full sisters
- His 74lb BW, 21.3 CE and -4.2 BW EPD's along with his trouble-free confirmation make him a logical calving ease choice. The only better thing is if they had the ACE logo for calving ease
- The real value may be the replacement females as F113's udder is awesome and Paul Rydeen states his Global females look fantastic as bred heifers, Global's 1st calf crop

27

ES M038W-1



CE SCORE

★★★

WS Proclamation E202
KBHR Global J138
Bar CK Ms X38 106Z
GW Predestined 701T
GW Miss GPRD 038W
GW Miss Lucky One 736R

Adj BW	Adj WW	Adj YW
93 ET	698	1304
Adj Scrotal	WDA	130 Day Gain
38.8	3.54	3.81

CE	BW	WW	YW	ADG	MCE	Milk	MWW	Stay	DOC	CW	YG	Marb	BF	REA	API	TI
12	0.3	81	122	0.26	6	28	68	23	19.0	28.1	-0.17	0.68	-0.046	0.43	166	91
		35				20	25	1	2			15			10	20

REG#4414097 • BD: 2/2/24 • **Homo Black Homo Polled 3/4 SM 7/32 AN 1/32 MX**



27

- Global son with a lot of gas in the tank. He'll be in the pen with the big boys on sale day. He's in the top 10% of the bull for WDA
- He's a product of some embryos we purchased out of GW 038W. After an extensive career at Gateway Simmentals where she raised the Lot 1 lead off bull 4 different times, which is no easy feat in Lewistown, MT, she moved into an extensive embryo program and currently has 91 offspring in the database to her name and still counting, she is 16 years old and still cranking out eggs
- Love the fact that his stay and docility scores are in the top 1% & 2% of the breed. He helped me write footnotes the other day as he followed me around the pen all afternoon wanting to lick the clipboard



28

ES MK95



CE SCORE

★★★

CE	BW	WW	YW	ADG	MCE	Milk	MWW	Stay	DOC	CW	YG	Marb	BF	REA	API	TI
12	1.1	85	146	0.38	9	24	67	23	13.4	28.8	-0.32	0.59	-0.037	0.95	166	92
		25	10	5	20		30	2			20	25		10	10	20

REG#4414139
BD: 2/9/24

Homo Black
Homo Polled
3/4 SM 1/4 AN

WS Proclamation E202
KBHR Global J138
Bar CK Ms X38 106Z
CLRS Homeland 327H
ES K95
ES D1

Adj BW	Adj WW	Adj YW
97	678	1242
Adj Scrotal	WDA	130 Day Gain
38.7	3.22	3.57

- The MK95's 1st calf heifer dam is off to a good start with this mid-sized, deep, soggy middled bull
- This is the first year we have had Homeland females in production, and they look to be around for a long time
- Had a WW ratio of 105 and YW ratio of 107

29 ES MK64

CE SCORE



WS Proclamation E202
KBHR Global J138
Bar CK Ms X38 106Z
GW Major Move 590E
ES K64
ES G16

Adj BW	Adj WW	Adj YW
88	684	1260
Adj Scrotal	WDA	130 Day Gain
36.3	3.30	3.65

CE	BW	WW	YW	ADG	MCE	Milk	MWW	Stay	DOC	CW	YG	Marb	BF	REA	API	TI
15	0.0	83	133	0.31	8	26	68	13	16.9	46.3	-0.23	0.48	-0.036	0.92	155	93
15	30	35	25	15	20	30	30		5	10		15			20	15

REG#4414183 • BD: 2/24/24 • **Hetero Black Homo Polled Purebred SM**

- With Nick's keen eye for cattle evaluation and working the picture and video pen for 3 days, he highly recommends this bull. I will also admit there was a bit of a WOW factor when he came through the gate
- With his width of rib and great structure it was a joy to just watch him move about the pen. He's a bull that on delivery day we're going to be proud that he's an ES bull coming off the trailer, but you'll be even happier that it's your pasture he's going to
- His dam is a powerful red baldy female out of Major Move that has impressed many who see her



29

30 ES MK90

CE SCORE



CE	BW	WW	YW	ADG	MCE	Milk	MWW	Stay	DOC	CW	YG	Marb	BF	REA	API	TI
14	-0.9	81	136	0.35	9	25	65	18	10.7	43.9	-0.32	0.52	-0.066	0.94	168	94
20	15		20	5	15			30		15		10		35	10	15

REG#4414208
BD: 3/5/24

Homo Black
Homo Polled
Purebred SM

WS Proclamation E202
KBHR Global J138
Bar CK Ms X38 106Z
KBHR Honor H060
ES K90
ES A110

Adj BW	Adj WW	Adj YW
88	588	1190
Adj Scrotal	WDA	130 Day Gain
34	3.09	3.80

- He carries the KBHR brand top and bottom. Sired by KBHR Global, the calving ease bull owned by the Paul Rydeen family and his mother's sire is the \$102,000 bull, KBHR Honor. Then throw in a few cows like Keller's 106Z and Sugar C4 along with our own A110 and it's a who's who pedigree
- We like this bull quite well right now but the way he's growing since weaning almost cracking the top ten in PWG, he could really look impressive by March 7



30

31 ES MK103

CE SCORE



CE	BW	WW	YW	ADG	MCE	Milk	MWW	Stay	DOC	CW	YG	Marb	BF	REA	API	TI
14	-2.3	76	119	0.27	9	23	61	19	11.6	35.9	-0.23	0.49	-0.057	0.63	166	91
20	10			35	15			20		30		15			10	20

REG#4414180
BD: 2/23/24

Homo Black
Homo Polled
Purebred SM

WS Proclamation E202
KBHR Global J138
Bar CK Ms X38 106Z
CLRS Homeland 327H
ES K103
ES E71

Adj BW	Adj WW	Adj YW
84	655	1112
Adj Scrotal	WDA	130 Day Gain
34.9	2.91	2.89

- Low BW son out of KBHR Global who we have used successfully on heifers
- I do feel this guy could possibly go 4 stars CE with some caution
- He is a long-sided bull with some width across his top and should sire a fancy looking set of replacements. Doesn't hurt that his granddam is our A110 donor cow



31

32 ES ME43-2

CE SCORE

★★★

Tehama Patriarch F028
CCR Bedrock 5171J
CCR Ms 2073 Cowboy 5171C
CCR Cowboy Cut 5048Z
ES E43
ES B19

Adj BW	Adj WW	Adj YW
72	657	1187
Adj Scrotal	WDA	130 Day Gain
36.9	3.33	3.35

CE	BW	WW	YW	ADG	MCE	Milk	MWW	Stay	DOC	CW	YG	Marb	BF	REA	API	TI
11	1.7	83	127	0.27	7	24	67	18	13.2	35.9	-0.11	0.57	-0.015	0.58	148	87
		30	35				30	15				25			30	35

REG#4414196 • BD: 3/3/24 • **Homo Black Homo Polled 5/8 SM 3/8 AN**

- If you are looking for two bulls to run in the same pasture, this pair definitely would fit the bill
- They were born as a set of twins, but we split them and ME43-2 was put on a foster dam
- If all the CCR Bedrock's are like these, he will be a heavily used bull in the future
- These guys have some great WW & YW EPD's and their granddam is the B19 cow who has a WW ratio of 113 on nine calves

SONS OF CCR BEDROCK 5171J

2 Full Brothers

33 ES ME43-1

CE SCORE

★★

CE	BW	WW	YW	ADG	MCE	Milk	MWW	Stay	DOC	CW	YG	Marb	BF	REA	API	TI
9	2.5	96	151	0.34	5	24	73	17	14.0	50.0	-0.01	0.60	-0.002	0.54	148	94
		5	10	15			10	30	30	15		25			30	15

REG#4414199
BD: 3/3/24

Homo Black
Homo Polled
5/8 SM 3/8 AN

Tehama Patriarch F028
CCR Bedrock 5171J
CCR Ms 2073 Cowboy 5171C
CCR Cowboy Cut 5048Z
ES E43
ES B19

Adj BW	Adj WW	Adj YW
84	641	1213
Adj Scrotal	WDA	130 Day Gain
39.9	3.39	3.61

**34 ES M234Z**

CE SCORE

★

CE	BW	WW	YW	ADG	MCE	Milk	MWW	Stay	DOC	CW	YG	Marb	BF	REA	API	TI
7	5.2	91	145	0.34	4	26	72	15	10.6	55.6	-0.20	0.65	-0.041	0.89	138	90
		15	15	15		35	15			10		20		15		25

REG#4414281
BD: 3/14/24

Homo Black
Homo Polled
5/8 SM 3/8 AN

Tehama Patriarch F028
CCR Bedrock 5171J
CCR Ms 2073 Cowboy 5171C
ES Power Up XS37
WINC Dora 234Z
Miss Werning 472P

Adj BW	Adj WW	Adj YW
107	666	1204
Adj Scrotal	WDA	130 Day Gain
36.5	3.39	3.38



- His dam was purchased from Windy Creek way back in 2013 as a show heifer that Adam campaigned the next summer in the Jr. shows. I believe Cash named her Dora after his favorite cartoon "Dora the Explorer"
- This guy is stout and thick from his side profile but is even more impressive when you get behind him
- His dam, Dora, has an impressive WW ratio of 109 on her 10 calves

35 ES MK29

CE SCORE



CE	BW	WW	YW	ADG	MCE	Milk	MWW	Stay	DOC	CW	YG	Marb	BF	REA	API	TI
16	-1.8	86	135	0.31	8	26	70	20	13.3	38.8	-0.13	0.71	-0.033	0.53	174	98
20	25	25	25	30	30	30	20	10				15			5	10

REG#4414141
BD: 2/10/24

Homo Black
Homo Polled
3/4 SM 1/4 AN

Tehama Patriarch F028
CCR Bedrock 5171J
CCR Ms 2073 Cowboy 5171C
TJ Gold 274G
ES K29
ES H109

Adj BW	Adj WW	Adj YW
79	642	1212
Adj Scrotal	WDA	130 Day Gain
37.7	3.14	3.61



35

- We really appreciate these Bedrock cattle for their awesome spread from low birth weight to high growth
- You know you're looking at him right when you scan his EPD profile and he's in the top 30% or better in 12 different traits or indexes
- I always call it a bonus when they are out of a TJ Gold daughter as she received a 9 on udder score on her first time out

36 ES MJ125

CE SCORE



CE	BW	WW	YW	ADG	MCE	Milk	MWW	Stay	DOC	CW	YG	Marb	BF	REA	API	TI
11	2.0	97	165	0.43	4	20	69	15	14.0	72.7	-0.22	0.52	-0.055	1.08	148	95
		4	2	1			25		30	1		30	25	4	30	10

REG#4414329
BD: 4/4/24

Homo Black
Homo Polled
3/4 SM 1/4 AN

Tehama Patriarch F028
CCR Bedrock 5171J
CCR Ms 2073 Cowboy 5171C
BCLR Cash Flow C820
ES J125
ES C108

Adj BW	Adj WW	Adj YW
92	658	1253
Adj Scrotal	WDA	130 Day Gain
37.6	3.47	3.76



36

- Don't be fooled, this young April bull is coming on fast. Both his WDA and PWG are in the top 20% of the group
- I'm looking at his picture along side his daddy's CCR Bedrock picture...like father like son
- Whether it's phenotype or genotype, the #'s say he should add lbs to a set of calves. He ratioed 102 for WW then on to 108 for YW and EPD's put him into the top 4% and 2% of the breed for WW & YW



ES J125, Dam

37 ES MK105

CE SCORE



CE	BW	WW	YW	ADG	MCE	Milk	MWW	Stay	DOC	CW	YG	Marb	BF	REA	API	TI
11	2.7	96	149	0.33	5	27	75	14	16.6	55.3	-0.15	0.38	-0.023	0.87	133	90
		5	10	20		30	5		10	10				20		25

REG#4414181
BD: 2/23/24

Hetero Black
Homo Polled
3/4 SM 1/4 AN

Tehama Patriarch F028
CCR Bedrock 5171J
CCR Ms 2073 Cowboy 5171C
TJ Platte River 370D
ES K105
ES F154

Adj BW	Adj WW	Adj YW
88	712	1222
Adj Scrotal	WDA	130 Day Gain
36.9	3.22	3.23



37

- This CCR Bedrock sire group is a great way to incorporate the lead off Angus bull Tehama Patriarch in the ABS lineup into our percentage Simmental population
- Whoever ends up with this guy walking their pastures this summer is going to be glad they raised their hand on March 7
- Has a WW ratio of 111 and YW ratio of 105 along with his WW & YW EPD's vault him to the top 5% and 10% of the breed. Also carries the ATM logo to solidify the fact he will increase pay weight

38 ES MD88

CE SCORE



CE	BW	WW	YW	ADG	MCE	Milk	MWW	Stay	DOC	CW	YG	Marb	BF	REA	API	TI
14	-2.3	74	109	0.22	7	23	60	18	12.9	27.1	-0.09	0.49	-0.017	0.39	150	84
35	20							15				35			30	

REG#4414277 • BD: 3/13/24 • **Homo Black Homo Polled 5/8 SM 3/8 AN**

- Sired by one of the rising stars of the breed, CCR Bedrock, a bull we have used successfully on heifers
- We feel a great choice for raising some replacement females with his G+ logo and solid pedigree

Tehama Patriarch F028
CCR Bedrock 5171J
CCR Ms 2073 Cowboy 5171C
CCR Drover 9094A

ES D88

ES Z40

Adj BW	Adj WW	Adj YW
84	614	1109
Adj Scrotal	WDA	130 Day Gain
38.9	3.14	3.12

39 ES MH21

CE SCORE



Hook's Beacon 56B
KBHR Honor H060
WS Miss Sugar C4
JK High Point 745
ES H21
ES F50

Adj BW	Adj WW	Adj YW
78	614	1150
Adj Scrotal	WDA	130 Day Gain
38.6	3.21	3.38

CE	BW	WW	YW	ADG	MCE	Milk	MWW	Stay	DOC	CW	YG	Marb	BF	REA	API	TI
17	-1.5	83	135	0.33	11	24	66	16	12.9	39.3	-0.27	0.21	-0.040	0.90	140	84
10	25	30	25	20	10		35	35			30			15		

REG#4414219 • BD: 3/7/24 • **Homo Black Homo Polled 3/4 SM 1/4 AN**

- If you like a bull that's moderate and stout, I marked this guy as cool looking as they come. He's wide, deep and packed full of muscles.
- Sired by the \$102,000 KBHR Honor bull who is out of the legendary Miss Sugar C4 cow
- Dam is sired by JK's high selling Angus bull a few years ago and has a very nice udder

**SONS OF
KBHR
HONOR
H060****40 ES MB19**

CE SCORE



CE	BW	WW	YW	ADG	MCE	Milk	MWW	Stay	DOC	CW	YG	Marb	BF	REA	API	TI
6	4.1	96	150	0.34	3	27	75	21	6.7	44.0	-0.38	0.42	-0.072	1.06	142	89
		5	10	15		25	10	4		25	10		10	5		25

REG#4414210
BD: 3/6/24**Homo Black
Homo Polled
3/4 SM 1/4 AN**

Hook's Beacon 56B
KBHR Honor H060
WS Miss Sugar C4
W/C United 956Y
ES B19
ES Z111

Adj BW	Adj WW	Adj YW
117	719	1276
Adj Scrotal	WDA	130 Day Gain
38.1	3.56	3.50



- If you can't stand cattle with performance, then you better move on to another lot because this cow family has it. His dam has a WW ratio of 113 on nine calves
- Darren Beitelspacher latched onto his full brother in 2023
- His dam, B19, has earned above average udder scores each year over her lifetime

41 ES MK88

CE SCORE



CE	BW	WW	YW	ADG	MCE	Milk	MWW	Stay	DOC	CW	YG	Marb	BF	REA	API	TI
14	-0.7	88	140	0.32	8	30	74	18	7.1	37.9	-0.32	0.28	-0.049	0.99	156	93
20	20	20	15	15	20	10	10	30		25		35		25	20	15

REG#4414171
BD: 2/16/24**Homo Black
Homo Polled
Purebred SM**

Hook's Beacon 56B
KBHR Honor H060
WS Miss Sugar C4
Rubys Outer Limits 935G
ES K88
ES C48

Adj BW	Adj WW	Adj YW
93	752	1320
Adj Scrotal	WDA	130 Day Gain
40	3.42	3.57



- He's the cowboy's kind, a real rancher's bull. He's extremely deep sided, easy fleshing and great footed
- We didn't realize just how special this beast was until we started putting the data together, he is the #2 WW bull ratioing 117 and #4 YW bull ratioing 113, then his genomic enhanced EPD's place him in the top 20% of the breed in 10 different traits
- Bulls like this are why we are blessed with so many repeat customers. He doesn't need the spotlight; he's just going to go to work so you can wean more lbs of calf in the fall

42 ES MA110-7

CE SCORE



CE	BW	WW	YW	ADG	MCE	Milk	MWW	Stay	DOC	CW	YG	Marb	BF	REA	API	TI
13	1.2	102	163	0.38	7	27	78	16	6.7	39.3	-0.31	0.55	-0.056	0.93	169	105
30		2	2	2		20	3			20		10		35	10	2

Hook's Beacon 56B
KBHR Honor H060
WS Miss Sugar C4
Remington Lock N Load 54U
ES A110
ESU56

Adj BW	Adj WW	Adj YW
89 ET	713	1259
Adj Scrotal	WDA	130 Day Gain
37.8	3.46	3.44

REG#4414150 • BD: 2/11/24 • **Homo Black Homo Polled Purebred SM**

- We have flushed the A110 cow a lot of ways over the years, and they have all worked, but one of the real gem was Honor which produced our Lot 1 in our 2023 bull sale going to Tom Harris over by Plankinton. We had more embryos in the tank so here are those results
- Their sire, KBHR Honor, was the \$102,000 high seller out of the Keller sale in 2021. Honor's dam is possibly the most prolific cow in the Simmental breed, Miss Sugar C4. She currently has 232 offspring in the database



ES A110, Dam



ES KA110-2, Full Brother



KBHR Honor H060, Sire



42



43

43 ES MA110-8

CE SCORE



CE	BW	WW	YW	ADG	MCE	Milk	MWW	Stay	DOC	CW	YG	Marb	BF	REA	API	TI
12	1.0	92	149	0.36	6	27	73	18	7.4	49.4	-0.43	0.50	-0.075	1.26	164	98
		15	10	4		20	10	30		10	30	15		3	15	10

Hook's Beacon 56B
KBHR Honor H060
WS Miss Sugar C4
Remington Lock N Load 54U
ES A110
ESU56

Adj BW	Adj WW	Adj YW
89 ET	610	1108
Adj Scrotal	WDA	130 Day Gain
34.5	3.03	3.14

REG#4414124 • BD: 2/7/24 • **Homo Black Homo Polled Purebred SM**

SONS OF LCDR FAVOR 149F



44 ES MA110-5



CE SCORE



LCDR Witness 541C
LCDR Favor 149F
WS Miss Sugar C4
Remington Lock N Load 54U
ES A110
ESU56

CE	BW	WW	YW	ADG	MCE	Milk	MWW	Stay	DOC	CW	YG	Marb	BF	REA	API	TI
8	2.8	82	135	0.33	3	23	64	13	14.1	45.2	-0.33	0.21	-0.070	0.95	126	81
			20	10					25	10				30		

REG#4414167 • BD: 2/15/24 • Homo Black Baldy Homo Polled Purebred SM

Adj BW	Adj WW	Adj YW
69 ET	527	1096
Adj Scrotal	WDA	130 Day Gain
34.5	2.97	3.58

- On February 15 the crew over at Glen Kummer's thought they were seeing a little double vision. I've been in their office at the calving barn, and I can understand why and let's just say they have supplies to withstand a pretty good snowstorm and not die of thirst. Glen called and said "Steve we put in 1 embryo, and we got 2 calves, and they look very similar, what's going on?" The answer is embryos can split!
- These two are ultra-attractive and ought to sire a ripping set of replacement females
- One of our favorite bulls in the sale last year was Lot 1, a full brother purchased by Harlee Heim for \$16,000. Being twins, these two are not as powerful today but we feel the genetic potential is certainly there



ES A110, Dam



ES LA110-1, Full Brother



LCDR Favor 149F, Sire

Full Brothers

45 ES MA110-6



CE SCORE



LCDR Witness 541C
LCDR Favor 149F
WS Miss Sugar C4
Remington Lock N Load 54U
ES A110
ESU56

CE	BW	WW	YW	ADG	MCE	Milk	MWW	Stay	DOC	CW	YG	Marb	BF	REA	API	TI
8	2.9	82	136	0.34	3	23	64	13	14.2	43.6	-0.34	0.21	-0.070	0.94	126	82
			35	20	10				25	15				35		

REG#4414168 • BD: 2/15/24 • Homo Black Homo Polled Purebred SM

Adj BW	Adj WW	Adj YW
69 ET	566	1081
Adj Scrotal	WDA	130 Day Gain
35.5	2.95	3.24

SONS OF HOOKS GALILEO 210G

46 ES MK11



CE SCORE



Bridle Bit Eclipse E744
Hook's Galileo 210G
Hook's Evita 18E
Bridle Bit Resource G9117
ES K11
ES H29

Adj BW	Adj WW	Adj YW
93	736	1199
Adj Scrotal	WDA	130 Day Gain
34.7	3.16	2.93

CE	BW	WW	YW	ADG	MCE	Milk	MWW	Stay	DOC	CW	YG	Marb	BF	REA	API	TI
17	-0.2	88	136	0.30	12	35	79	20	17.0	46.3	-0.20	0.64	-0.026	0.89	181	101
4	25	20	20	20	1	2	2	10	5	10	5				3	4

REG#4414138 • BD: 2/9/24 • Homo Black Homo Polled Purebred SM

- This bull gets my blood pumping a little, he's one of those great examples that you can have it all. It's easy to see what all the hype of Galileo is
- His genomic profile is phenomenal with 12 categories in the top 20% or better in the breed
- He weaned off the #5 WW bull to ratio 115 and I'm not even going to describe his physical appearance, look at the picture or better yet, watch is video
- What I feel takes him to another level was the day he was born his Bridle Bit Resource mother was awesome. She was a great mother with a good attitude and an udder I wish every cow on our place had. At the time we heard Resource was not making semen, knowing we wanted to continue that bloodline and CK Cattle was selling some Bridle Bit Recharge semen, a Resource son, a few days later, we went to Highmore and bought 20 units on their sale for about \$240/unit



47 ES MK17



CE SCORE



Bridle Bit Eclipse E744
Hook's Galileo 210G
Hook's Evita 18E
TJ Gold 274G
ES K17
ES H80

Adj BW	Adj WW	Adj YW
90	647	1182
Adj Scrotal	WDA	130 Day Gain
35.6	3.06	3.38

CE	BW	WW	YW	ADG	MCE	Milk	MWW	Stay	DOC	CW	YG	Marb	BF	REA	API	TI
13	1.0	89	137	0.30	9	28	73	19	15.3	30.0	-0.14	0.73	-0.019	0.57	177	101
30		20	20	20	15	20	15	15	15			3			4	4

REG#4414149 • BD: 2/11/24 • Homo Black Homo Polled Purebred SM

- Another Galileo son that checks all the boxes and will move any program forward. We are truly excited to see what everyone's appraisal of this stud is
- Physically he's the rare combination of a big, bold robust body yet with a smoother calving ease look. This is his mother's maiden voyage for raising a calf but keep this up and her ship will have many more voyages
- Love the fact that he's out of a TJ Gold daughter and ranks in the top 20% of the breed in 11 different categories



48 ES MK150CE SCORE
★★★★★

Bridle Bit Eclipse E744
Hook's Galileo 210G
Hook's Evita 18E
TJ Gold 274G
ES K150
ES A110

Adj BW	Adj WW	Adj YW
73	622	1139
Adj Scrotal	WDA	130 Day Gain
34.8	2.95	3.27

CE	BW	WW	YW	ADG	MCE	Milk	MWW	Stay	DOC	CW	YG	Marb	BF	REA	API	TI
19	-3.0	74	116	0.27	12	32	68	20	12.4	23.0	-0.30	0.65	-0.055	0.69	184	97
1	3			35	1	10	25	15				4			2	10

REG#4414166 • BD: 2/15/24 • **Homo Black Homo Polled Purebred SM**

48

- Yes, I gave this bull 4 stars for CE without Mahdi's blessing of an ACE logo. But I guess I used a little cowboy logic here. All my notes in the lot referred to him as a very nice calving ease prospect, moderate sized, lighter boned, nice-small head that blends neatly into his front shoulder, and that's without any numbers
- The statistics confirmed what the eyes were seeing with his 68lb BW and CE & BW EPD's that put him in the top 1% and 3% of the breed
- A Galileo X TJ Gold X our A110 donor that's power in the pedigree

49 ES MD113CE SCORE
★★★★★

CE	BW	WW	YW	ADG	MCE	Milk	MWW	Stay	DOC	CW	YG	Marb	BF	REA	API	TI
7	1.5	85	136	0.32	2	28	71	16	15.9	45.9	-0.16	0.57	-0.048	0.60	141	89
		25	20	25		20	15	35	15	25		25				25

REG#4414274
BD: 3/13/24

Hetero Black
Homo Polled
5/8 SM 3/8 AN

Southern Fortune Teller
GW Medicine Man 200K
GW Miss Pendleton 013H
HS Battle Cry X297K
ES D113
ES A75

Adj BW	Adj WW	Adj YW
114	699	1261
Adj Scrotal	WDA	130 Day Gain
32.4	3.56	3.53



ES K84, Maternal Sister



ES LD113, Maternal Brother

- A really long sided Medicine Man son with WW & YW ratios of 109 & 108
- This guy's pedigree is almost certain to be an outcross pedigree from anything, both top & bottom side
- His WDA puts him in the top 10% of Simmy bulls for gain

50 ES MG53CE SCORE
★★★★★

CE	BW	WW	YW	ADG	MCE	Milk	MWW	Stay	DOC	CW	YG	Marb	BF	REA	API	TI
13	0.2	94	153	0.37	5	27	74	17	13.7	54.7	-0.18	0.62	-0.045	0.79	161	99
		10	5	10		25	10	25	35	10		20		30	15	10

REG#4414312
BD: 3/28/24

Hetero Black
Homo Polled
3/4 SM 1/4 AN

Southern Fortune Teller
GW Medicine Man 200K
GW Miss Pendleton 013H
ES EX75-1
ES G53
ES D130

Adj BW	Adj WW	Adj YW
97	723	1301
Adj Scrotal	WDA	130 Day Gain
38.8	3.69	3.65



50



ES J11, Maternal Sister

- Here's a great example that you can have it all. He's a bull we really like out in the lot, but when you sit down and study him on paper the blood really gets pumping
- Boasts WW & YW Ratios of 112 and his WDA puts him in the #6 position
- What really puts him over the top is his maternal possibilities, his dam has received some high udder scores over the years and check out her two daughters ES J9 going to Deryll Riley in NE in 2023 for \$10,000, the other, ES K74, you will have a chance to own her on March 7. Full disclosure here, Adam just told me last night that L74 is his favorite bred heifer

SONS OF JC QUIETMAN 758K

51 ES MK69



CE SCORE



CLRS Guardian 317G
JC Quiet Man 758K
J-J Ms 8T Cowgirl 917G
KBHR Honor H060
ES K69
ES F145

Adj BW	Adj WW	Adj YW
89	735	1260
Adj Scrotal	WDA	130 Day Gain
36.4	3.26	3.31

CE	BW	WW	YW	ADG	MCE	Milk	MWW	Stay	DOC	CW	YG	Marb	BF	REA	API	TI
12	0.6	98	148	0.32	7	28	76	17	8.3	49.6	-0.43	0.48	-0.063	1.35	164	101
		5	10	15		20	5	35		10	30	15		1	15	4

REG#4414106 • BD: 2/5/24 • Homo Black Homo Polled Purebred SM

- Sit back and listen to this pedigree... JC Quiet Man out of a daughter of the \$102,000 KBHR Honor then back to a full sister to ES Right Time. I'd be willing to bet a fair amount that there is no other animal with that same pedigree
- It goes without saying he is an easy bull to find in the pen and we've had our eye on him all summer in the pasture and he just keeps coming on. Can't wait to see what he looks like in another 30 days
- He's so much more than just a picture bull; he's top tier for performance ratioing 114 for WW and 108 for YW. Brings a lot of carcass potential to the table, REA is even in the top 1% and API and TI in the top 15% and 4% of the breed



51

52 ES MK111



CE SCORE



REG#4414161
BD: 2/13/24

Homo Black
Homo Polled
Purebred SM

CLRS Guardian 317G
JC Quiet Man 758K
J-J Ms 8T Cowgirl 917G
TJ Platte River 370D
ES K111
ES B28

Adj BW	Adj WW	Adj YW
95	741	1270
Adj Scrotal	WDA	130 Day Gain
37.9	3.31	3.35

- This is a larger frame bull of the JC Quiet Man's for those that want to put a little more frame in their cattle
- I know a lot of thought goes into naming a bull because what happens if it backfires, I'm happy to say the Quiet Man's have lived up to their name and are good to be around
- With his genomic profile and WW & YW ratios of 115 and 109, I'm sure he'll have some friends



52

53 ES MK104



CE SCORE



REG#4414147
BD: 2/11/24

Homo Black
Homo Polled
Purebred SM

CLRS Guardian 317G
JC Quiet Man 758K
J-J Ms 8T Cowgirl 917G
Gibbs 9114G Essential
ES K104
ES D44

Adj BW	Adj WW	Adj YW
78	705	1253
Adj Scrotal	WDA	130 Day Gain
39.8	3.23	3.46

- Heifer bull deluxe here, caring the ACE logo and 16.5 direct CE and -2.8 BW EPD and an actual birth weight of 72 lbs
- Out of a 1st calf heifer whose dam D44 has a WW ratio of 103 on five calves
- The JC Quiet man sire group has been a pleasant surprise for us and I'm sure any that go through the bull sale day will agree



53

SONS OF CLRS HERO 8086H

54 ES MK155

CE SCORE



Hook's Black Hawk 50B
CLRS Hero 8086H
Hook's Flourish 86F
ES Right Time Fa110-4
ES K155
Sennett Monique 26A

Adj BW	Adj WW	Adj YW
94	661	1177
Adj Scrotal	WDA	130 Day Gain
31.1	3.06	3.27

CE	BW	WW	YW	ADG	MCE	Milk	MWW	Stay	DOC	CW	YG	Marb	BF	REA	API	TI
12	0.0	71	107	0.22	6	22	57	23	8.8	18.5	-0.31	0.10	-0.038	0.79	144	75
	30							1							35	

REG#4414132 • BD: 2/8/24 • **Homo Black Homo Polled Purebred SM**

54

- His dam, K155, is the product of a few embryos we got from Barry Ostrum a few years ago out of ES Right Time X Monique
- A full sister to his dam was selected by Cable-C-Cross Ranch or should I say Dawn Cable but I'm sure Harley gave it his blessing in last year's sale and also had a very nice Hero calf alongside
- He's chucked full of red meat and is in the top 15% of the breed for stayability



ES K156, Full Sister to Dam

55 ES MK123

CE SCORE



Hook's Black Hawk 50B
CLRS Hero 8086H
Hook's Flourish 86F
RFS Homeland H18
ES K123
ES G166

Adj BW	Adj WW	Adj YW
109	644	1166
Adj Scrotal	WDA	130 Day Gain
33.8	3.01	3.31

CE	BW	WW	YW	ADG	MCE	Milk	MWW	Stay	DOC	CW	YG	Marb	BF	REA	API	TI
10	2.0	79	119	0.25	3	20	59	19	8.7	20.9	-0.41	0.24	-0.039	1.13	140	81
								20						10		

REG#4414145 • BD: 2/11/24 • **Homo Black Star Homo Polled Purebred SM**

55

- This homo black, star headed bull got a lot of high marks the other day as I strolled through the bull pen writing notes
- Simply put he looks like a bull with his overall mass and capacity and to top it off, he's got a great attitude, kept wanting to lick my clipboard
- His great granddam is our W46 cow who for years was the picture-perfect cow that all others were compared to. Many of her sons found homes in some great programs including ES Salem who resides at Long's Simmentals in Iowa

56 ES MK22

CE SCORE



CE	BW	WW	YW	ADG	MCE	Milk	MWW	Stay	DOC	CW	YG	Marb	BF	REA	API	TI
19	-2.4	82	123	0.26	9	20	61	21	3.2	29.4	-0.34	0.57	-0.041	0.99	171	93
4	15	35			20			4			15	25		10	10	15

REG#4414127 • BD: 2/8/24

Homo Black Homo Polled 3/4 SM 1/4 AN

- This Hero son comes with all the bells and whistles of a 4-star calving ease bull. Low BW whose EPD's match, has a small head with a nice smooth calving ease look and has Mahdi's blessing with an ACE logo
- The best part is he's more than just a heifer bull candidate; a lot of cowboys would find him looking for a cow bull
- His TJ Nebraska mother has a fantastic udder with just the right size teats



56

Hook's Black Hawk 50B

CLRS Hero 8086H

Hook's Flourish 86F

TJ Nebraska 258G

ES K22

ES H76

Adj BW	Adj WW	Adj YW
74	641	1151
Adj Scrotal	WDA	130 Day Gain
31.1	2.99	3.23

57 ES MK68

CE SCORE



CE	BW	WW	YW	ADG	MCE	Milk	MWW	Stay	DOC	CW	YG	Marb	BF	REA	API	TI
15	-1.7	68	114	0.29	8	21	55	22	6.5	27.4	-0.45	0.39	-0.060	1.18	155	80
25	25							2			2	25	2		20	

REG#4414178

BD: 2/22/24

**Homo Black Baldy
Homo Polled
3/4 SM 1/4 AN**

Hook's Black Hawk 50B

CLRS Hero 8086H

Hook's Flourish 86F

CLRS Homeland 327H

ES K68

ES A110

Adj BW	Adj WW	Adj YW
75	571	1075
Adj Scrotal	WDA	130 Day Gain
34.9	2.78	3.20

- This moderate framed brockle faced bull is royally bred. His mother is a Homeland X A110. She had a full sister sell in last year's sale that only ended up about 10 miles from here at the Hofer Ranch by Bridgewater
- With his 70lb BW and CE look he should be a real trouble-free bull
- His dam also received very high scores on udder structure at calving last spring



57

ES A110, Grandam

58 ES MH72

CE SCORE



CE	BW	WW	YW	ADG	MCE	Milk	MWW	Stay	DOC	CW	YG	Marb	BF	REA	API	TI
18	-3.3	76	124	0.30	10	30	68	16	15.7	50.9	-0.12	0.67	-0.021	0.75	167	94
5	10				35	10	25	35	15	15		15		35	10	15

REG#4414256

BD: 3/11/24

**Homo Black
Homo Polled
5/8 SM 3/8 AN**

Gibbs 9121G Kenworth

Gibbs Kingpin 1140J

Gibbs 8028F Fancy 6138D

EGL Cinched 116F

ES H72

ES Y59

Adj BW	Adj WW	Adj YW
80	584	1198
Adj Scrotal	WDA	130 Day Gain
37.3	3.31	3.87

- I know he doesn't have the ACE logo, but looking at all the data the dam's history and structural appraisal we gave him 4 stars for calving ease
- The maternal baldy brother selected by Ken Isley last year had that same calving ease look
- I'm talking all this CE but he's the #8 bull on the list for PWG so he offers the best of both worlds



58

ES LH72, Maternal Brother

59 ES MG73

CE SCORE



CE	BW	WW	YW	ADG	MCE	Milk	MWW	Stay	DOC	CW	YG	Marb	BF	REA	API	TI
10	1.4	82	126	0.28	5	27	68	23	11.7	36.3	-0.25	0.37	-0.065	0.62	146	83
		35				25	25	1			35		15		35	

REG#4414273 • BD: 3/12/24 • **Homo Black Star Homo Polled 3/4 SM 1/4 AN**

59

EGL Firesteel 103F

CLRS Jericho 336J

CLRS All Xcellence 316 A

SFI Enough Said D3

ES G73

ES Y9

Adj BW	Adj WW	Adj YW
98	663	1224
Adj Scrotal	WDA	130 Day Gain
40.4	3.43	3.53

- We gave this star-faced bull a lot of high marks in the bull pen. He is soft structured with a lot of rib shape
- He is the highest performing Jericho son in the offering for WDA and PWG
- We selected his sire a couple of years ago out of the Clear Springs sale for his awesome structure and it seemed like every time I looked at him, he had that "here I am, take my picture" look



ES K59, Maternal Sister

SONS OF CLRS JERICO 336J**60 ES MK148**

CE SCORE



CE	BW	WW	YW	ADG	MCE	Milk	MWW	Stay	DOC	CW	YG	Marb	BF	REA	API	TI
16	0.2	93	146	0.33	7	26	73	17	14.9	55.2	-0.25	0.78	-0.052	0.97	172	102
15		10	10	20		30	10	30	20	10	35	10	25	10	10	3

REG#4414154
BD: 2/12/24**Homo Black
Homo Polled
3/4 SM 1/4 AN**

EGL Firesteel 103F

CLRS Jericho 336J

CLRS All Xcellence 316 A

LBRS Genesis G69

ES K148

ES A110

Adj BW	Adj WW	Adj YW
89	679	1244
Adj Scrotal	WDA	130 Day Gain
35.8	3.23	3.57

- Do your homework and study your lesson here, this guy is royally bred and has the #'s to back it up ratioing 106 for Ww and 107 for YW and check out his fantastic genomic profile with 11 categories in the top 20% of the breed
- His dam, K148, is a full sib to the good bull Rich Meyer bought two years ago and the two good heifers going to Begger Diamond V Ranch and Beitelspacher Ranch
- We thought enough of his mother and this pair last spring to flush her



ES K147, Full Sister to Dam



ES KA110-5, Full Sib to Dam

61 ES MF145

CE SCORE



CE	BW	WW	YW	ADG	MCE	Milk	MWW	Stay	DOC	CW	YG	Marb	BF	REA	API	TI
16	-1.4	77	113	0.23	7	27	65	19	6.9	40.6	-0.41	0.47	-0.079	1.05	156	87
15		30				25		10		35	4		10	5	20	35

REG#4414217
BD: 3/7/24**Homo Black
Homo Polled
3/4 SM 1/4 AN**

EGL Firesteel 103F

CLRS Jericho 336J

CLRS All Xcellence 316 A

Welshs Dew It Right 067T

ES F145

ES A110

Adj BW	Adj WW	Adj YW
74	596	1103
Adj Scrotal	WDA	130 Day Gain
38.1	3.10	3.20

- Study your lesson here, Dam is a full sister to ES Right Time who is doing an excellent job for the Effling family at CK Cattle. She also scores very well on udder quality each year at calving
- Two maternal brothers had a lot of attention in past years, each bringing north of \$10,000
- The real hidden gem is Lot 51, ES MK69, one of our favorites, he's out of a maternal sister to this guy. Power in the pedigree



ES LF145, Maternal Brother



62 ES MF14

CE SCORE



CE	BW	WW	YW	ADG	MCE	Milk	MWW	Stay	DOC	CW	YG	Marb	BF	REA	API	TI
6	4.5	86	130	0.28	2	22	65	20	6.3	41.5	-0.30	0.41	-0.070	0.80	133	81
	25	30						10		30	25		15	30		

REG#4414288
BD: 3/15/24**Homo Black**
Homo Polled
5/8 SM 3/8 AN**EGL Firesteel 103F**
CLRS Jericho 336J
CLRS All Xcellence 316 A
CCR Santa Fe 9349Z**ES F14**
ES D107

Adj BW	Adj WW	Adj YW
113	653	1172
Adj Scrotal	WDA	130 Day Gain
38.1	3.32	3.27

- I know you probably think we are crazy selling a bull with a little more BW, but if we felt it was an issue we wouldn't have him in the sale. I'm not saying he's a heifer bull but take a look at him, he's actually fairly smooth made and not big jointed
- I you're looking for a larger framed Simmy bull on the black side, this homo black dude has a lot to offer
- Dam has a WW ratio of 105 on six calves and YW ratio of 106, these cattle will grow

CLRS Jericho
336J, Sire

ES KF14, Maternal Brother



62

SONS OF LSR DUTTON 611K**63 ES MF81**

CE SCORE



CE	BW	WW	YW	ADG	MCE	Milk	MWW	Stay	DOC	CW	YG	Marb	BF	REA	API	TI
2	6.6	115	185	0.44	1	24	81	24	14.7	55.6	-0.38	0.24	-0.046	1.41	149	97
	1	1	1				2	1	20	2				1	30	10

REG#4414275 • BD: 3/13/24 • **Homo Black Homo Polled Purebred SM**

- OH MY, OH MY what do we have here? This stud has a lot of #1's across the charts. #1 WW bull ratioing a whopping 131, #1 YW bull ratioing 118 so naturally he's the #1 WDA bull. If you sell them by the pound, he makes quite a case to be considered
- His dam, F81 not only raises bulls, but she had a bred heifer that sold in last year's sale to the 1 Bar Ranch in ND for \$13,500. Amy Murphy called this fall and said her Cochise bull calf she weaned is their # calf on the ranch
- He's not just good on paper, he's fun to watch out in the pen, he has a great rear leg and moves about as well as any



ES K80, Maternal Sister



ES HF81, Maternal Brother



63

ASR American Proud H0301
LRS Dutton 611K
LRS Ms Eagle 983G
3C Pasque 4331B B
ES F81
ES B8

Adj BW	Adj WW	Adj YW
116	843	1375
Adj Scrotal	WDA	130 Day Gain
38.4	3.89	3.35

64 ES MC49

CE SCORE



CE	BW	WW	YW	ADG	MCE	Milk	MWW	Stay	DOC	CW	YG	Marb	BF	REA	API	TI
12	0.2	85	119	0.21	6	20	62	17	13.8	30.9	-0.38	0.44	-0.052	1.05	155	92
	30	30						35	25			15		15	20	20

REG#4414318
BD: 3/30/24**Homo Black**
Hetero Polled
Purebred SM**ASR American Proud H0301**
LRS Dutton 611K
LRS Ms Eagle 983G
CCR Cowboy Cut 5048Z**ES C49**
EST51

Adj BW	Adj WW	Adj YW
91	708	1157
Adj Scrotal	WDA	130 Day Gain
39.9	3.28	2.82

- His sire, LRS Dutton, was the stud that led off the 2022 Lassle sale and deservedly so
- His dam, C49, is a hard-working gal that has a WW ratio of 103 on seven calves
- His G+ Right Choice Score makes him a logical choice for retaining females



ES JC49, Maternal Brother



64

65 ES MG7

CE SCORE



Rubys Turnpike 771E
KRJ Dakota Outlaw G974
BRKC Daphne DY37
CCR Boulder 1339A

ES G7

ES E41

Adj BW	Adj WW	Adj YW
96	726	1324
Adj Scrotal	WDA	130 Day Gain
34.7	3.74	3.76

CE	BW	WW	YW	ADG	MCE	Milk	MWW	Stay	DOC	CW	YG	Marb	BF	REA	API	TI
11	1.7	90	148	0.36	5	25	70	16	13.4	30.5	-0.58	0.17	-0.122	1.13	141	89
		15	10	4			20		30		2		3	10		25

REG#4414309 • BD: 3/27/24 • **Homo Black Homo Polled Purebred SM**

- The bar was set awfully high when his full brother sold last year to Tanner Garrison in OK for \$16,000
- When you take a look at the actual #'s, this stud is saying "look at me too". Ratioed 113 for WW and 114 for YW and is the #2 bull on the list for WDA, his brother last year was #5. He carries the G+ and ATM logos, his brother only had the ATM logo
- His good uddered dam has raised four bulls that all sold in the sales and has a WW ratio of 106 then on to a whopping YW ratio of 110 on them



ES LG7, Full Brother

66 ES MG107

CE SCORE



CE	BW	WW	YW	ADG	MCE	Milk	MWW	Stay	DOC	CW	YG	Marb	BF	REA	API	TI
10	2.3	91	125	0.21	3	19	64	16	14.6	15.7	-0.62	0.29	-0.111	1.16	141	89
		15	35						20		1	35	5	10		25

REG#4414251
BD: 3/11/24

Hetero Black
Homo Polled
Purebred SM

Rubys Turnpike 771E
KRJ Dakota Outlaw G974
BRKC Daphne DY37
TKCC Carver 65C

ES G107

ES A45

Adj BW	Adj WW	Adj YW
108	651	1057
Adj Scrotal	WDA	130 Day Gain
34.3	2.98	2.56



ES KG107, Maternal Brother



ES J28, Maternal Sister

- His dam really likes to make them fancy and long sided. A maternal brother with a great look went to Steve Hicks in 2023
- All calves are ringing the bell right now at sale barns across the country, but a fancy set he will sire will ring the bell a little louder
- His dam had a WW ratio of 115

67 ES MH76

CE SCORE



CE	BW	WW	YW	ADG	MCE	Milk	MWW	Stay	DOC	CW	YG	Marb	BF	REA	API	TI
12	1.6	90	137	0.29	5	20	65	20	14.1	52.8	-0.25	0.42	-0.053	0.92	149	88
		15	20					5	30	10	35		25	15	30	30

REG#4414268
BD: 3/12/24

Homo Black
Homo Polled
3/4 SM 1/4 AN

LBRS Genesis G69
CCR THR El Dorado 4142J
CCR Ms Catalyst 4142B
BCLR Cash Flow C820

ES H76

ES X80

Adj BW	Adj WW	Adj YW
82	620	1162
Adj Scrotal	WDA	130 Day Gain
35.4	3.22	3.42



- I wish we had a few more El Dorado's to offer, he was one I was really excited about last year but as luck would have it, they were mostly heifers
- To really appreciate this bull, you've got to take him for a test run and spin him around for a rear view, he's got a pair of pants
- Offers some growth as his WW & YW EPD's are in the top 15 & 20% of the breed and keep all the replacement females as his dam has a gorgeous udder

68 ES MK127

CE SCORE



Tehama Tahoe B767
LRS Rarity 983J
LRS Ms Eagle 983G
TFS Powder River 8658F
ES K127
ES A4

Adj BW	Adj WW	Adj YW
87	714	1307
Adj Scrotal	WDA	130 Day Gain
35	3.39	3.76

CE	BW	WW	YW	ADG	MCE	Milk	MWW	Stay	DOC	CW	YG	Marb	BF	REA	API	TI
13	-0.6	89	147	0.37	6	27	72	15	14.8	65.5	-0.24	0.41	-0.035	1.20	145	91
		15	10	10		30	15		25	2				2	35	20

REG#4414142 • BD: 2/10/24 • **Homo Black Baldy Homo Polled 5/8 SM 3/8 AN**

- This blaze-faced LRS Rarity's son is a rare find. We sampled this Lassle bull the last couple of years on heifers and man can those calves grow
- We got a long calving just fine, but he probably belongs on cows and he's an excellent choice for adding some frame and pounds to a set of calves
- Look at his WW & YW ratios at 111 & 112, he's been a standout all year long and it doesn't hurt he's in the top 2% for REA

**SON OF
LRS
RARITY
983J**

**69 ES MG38**

CE SCORE



Redhill 672X X004 231A
CLRS Homeland 327H
CLRS Always Xcellent
CCR Boulder 1339A
ES G38
ES E9

Adj BW	Adj WW	Adj YW
75	590	1127
Adj Scrotal	WDA	130 Day Gain
35.5	3.14	3.38

CE	BW	WW	YW	ADG	MCE	Milk	MWW	Stay	DOC	CW	YG	Marb	BF	REA	API	TI
16	-2.3	76	121	0.28	10	24	61	23	14.9	24.9	-0.32	0.61	-0.049	0.82	173	91
		15	20		10			1	20		20	20		25	5	25

REG#4414206 • BD: 3/5/24 • **Homo Black Homo Polled 5/8 SM 3/8 AN**

- Perfect fit for someone looking for an all-purpose, trouble-free bull that's a joy to be around
- Study his EPD profile, he lands in the top 25% of the breed in 10 different categories
- His sire, CLRS Homeland, was my favorite bull to surface back in 2021, as a matter of fact, we teamed up with Tom Hook to try to buy him but when the gavel landed, we just didn't have as much money as Quinn Lafollette and the Black Summit Crew

**SON OF
CLRS
HOMELAND
327H**



70 ES MH81

CE SCORE

★★★

CCR Pounder 2045F
CCR Nationwide 4503J
CCR Ms National 4503B
W/C Fort Knox 609F
ES H81
ES X85

Adj BW	Adj WW	Adj YW
96	657	1240
Adj Scrotal	WDA	130 Day Gain
36.7	3.45	3.68

CE	BW	WW	YW	ADG	MCE	Milk	MWW	Stay	DOC	CW	YG	Marb	BF	REA	API	TI
11	1.4	80	131	0.32	7	29	69	15	13.8	37.4	-0.04	0.57	-0.018	0.36	143	86
			30	25		15	20		35			25				35

REG#4414292 • BD: 3/17/24 • Hetero Black Homo Polled 3/4 SM 1/4 AN



70

- Backed by a cow family that's doing a lot of the right things, his dam has a WW ratio of 106 on three calves then on to ratio 110 for YW. And his granddam brought home 12 calves over her long career before retiring last year
- Much like his maternal brother last year, his WDA and PWG are toward the top end of the list
- His sire CCR Nationwide, was a popular CCR Pounder son in the Cow Camp 2023 sale that traces back to one of the Cow Camp's top cow families



ES KH81, Maternal Brother

71 ES MJ19

CE SCORE

★★★

CE	BW	WW	YW	ADG	MCE	Milk	MWW	Stay	DOC	CW	YG	Marb	BF	REA	API	TI
11	0.5	84	130	0.29	6	25	67	18	17.2	47.6	-0.07	0.57	0.003	0.75	152	89
		30	30				30	15	10	20		25		35	25	25

REG#4414317
BD: 3/30/24

Homo Black Baldy
Homo Polled
3/4 SM 1/4 AN

CCR Pounder 2045F
CCR Nationwide 4503J
CCR Ms National 4503B
TJ Gold 274G
ES J19
ES G109

Adj BW	Adj WW	Adj YW
91	620	1143
Adj Scrotal	WDA	130 Day Gain
34.4	3.17	3.31



71

ES J19, Dam



- Neat black baldy bull in the works here
- Out of a nice TJ Gold daughter, in our opinion the TJ Gold's are some of the best females in the business
- I think it is a good option for those looking for a trouble-free package. He ranks in the to 30% of the breed in nine different EPD's

72 ES MD29-2

CE SCORE

★★★

CE	BW	WW	YW	ADG	MCE	Milk	MWW	Stay	DOC	CW	YG	Marb	BF	REA	API	TI
14	-2.0	75	117	0.26	7	23	60	19	9.6	43.4	-0.36	0.53	-0.068	1.02	168	91
	25	10			30			15		15		10		20	10	20

REG#4414096
BD: 1/30/24

Homo Black
Homo Polled
Purebred SM

CLRS Guardian 317G
CLRS Johnny Walker 1049J
Hook's Yuma 49Y
IR Zeus A718
NLC D29 Dawn Day
NLC Blanche B36

Adj BW	Adj WW	Adj YW
77 ET	602	965
Adj Scrotal	WDA	130 Day Gain
33.1	2.69	2.29



CLRS Johnny Walker 1049J, Sire

- Calving ease, maternal and high carcass value is what this guy brings to the table
- This genetic package traces back to a few embryos we bought from a cow out of the Nelson herd in Montana and now resides at JC Simmentals in Michigan
- Just want to be up front, if disposition is a main concern, I would suggest other lots

73 ES MK267

CE SCORE



CE	BW	WW	YW	ADG	MCE	Milk	MWW	Stay	DOC	CW	YG	Marb	BF	REA	API	TI
11	0.8	88	129	0.26	7	27	71	18	13.9	30.1	-0.25	0.41	-0.050	0.66	153	92
		25	30			25	20	30	25		20				25	20

REG#4414194 • BD: 3/2/24 • **Homo Black Homo Polled Purebred SM**

CDI Innovator 325D
LCDR Progressive 106G
WS Miss Sugar C4
ES Pursuit HD55-2
BCLR Miss Pursuit K267
BCLR Miss Pgrid G960

Adj BW	Adj WW	Adj YW
104	707	1140
Adj Scrotal	WDA	130 Day Gain
34.3	2.99	2.74

- This super long sided individual is out of an own daughter of ES Pursuit, the sire of a great group of bulls in that division
- His granddam has weaned three calves for Doug Bichler with a WW ratio of 107 and YW ratio of 106
- We did give his 1st calf dam a 9 on udder score



73

74 ES MK231

CE SCORE



CE	BW	WW	YW	ADG	MCE	Milk	MWW	Stay	DOC	CW	YG	Marb	BF	REA	API	TI
13	2.0	94	149	0.34	5	23	70	15	13.0	51.8	-0.23	0.44	-0.054	0.85	154	96
		10	10	10			20		35	4		15			25	10

REG#4414176
BD: 2/21/24

Hetero Black Baldy
Homo Polled
Purebred SM

CDI Innovator 325D
LCDR Progressive 106G
WS Miss Sugar C4
HHS Incognito 847G
BCLR Miss Incognito K231
BCLR Miss Imperial G901

Adj BW	Adj WW	Adj YW
89	520	1075
Adj Scrotal	WDA	130 Day Gain
32.3	2.96	3.50

- Tremendously long sided bull that would do a nice job on some smaller British based cows to give you a fancy set of feeder calves with a little chrome
- I'll be honest, I'm not sure where it all comes from but has WW & YW EPD's in the top 20% of the breed
- We have used his sire successfully on heifers and his smaller head and sleek neck and shoulder would indicate he may offer some calving ease also



74

SONS OF BRIDLE BIT EFFICIENT J160**75 ES MG75**

CE SCORE



CE	BW	WW	YW	ADG	MCE	Milk	MWW	Stay	DOC	CW	YG	Marb	BF	REA	API	TI
8	-0.3	91	140	0.30	4	22	68	12	16.0	41.6	-0.32	0.34	-0.050	1.02	127	89
		10	15	35			25		15	30	20				10	25

REG#4414279
BD: 3/13/24

Hetero Black
Homo Polled
5/8 SM 5/16 AR 1/16 AN

Hook's Eagle 6E
Bridle Bit Efficient J160
Bridle Bit Miss Z202
WS All Aboard B80
ES G75
EIR C201

Adj BW	Adj WW	Adj YW
96	586	1104
Adj Scrotal	WDA	130 Day Gain
32.9	3.14	3.27

- This ultra-attractive, long sided bull is very easy on the eyes
- His full brother was the #1 WDA and PWG bull in last year's sale. So naturally his dam has a YW ratio that's above average at 108
- His granddam, C201, has her own Bridle Bit Efficient son in the sale Lot 78. She has a whopping 116 WW ratio on six calves, buy your bulls from good cow families



75

ES LG75, Full Brother

76 ES MH134

CE SCORE



Hook's Eagle 6E
Bridle Bit Efficient J160
Bridle Bit Miss Z202
CDI Abundance 391C
ES H134
ES B34

Adj BW	Adj WW	Adj YW
101	657	1218
Adj Scrotal	WDA	130 Day Gain
37	3.37	3.53

CE	BW	WW	YW	ADG	MCE	Milk	MWW	Stay	DOC	CW	YG	Marb	BF	REA	API	TI
7	2.1	86	138	0.33	1	24	66	16	9.6	33.7	-0.33	0.46	-0.046	0.98	146	91
		25	15	10			35			35		15		25	30	20

REG#4414280 • BD: 3/14/24 • Hetero Black Homo Polled Purebred SM



76

- Bulls like this will sire those good doing feeder calves that will make you money whether you sell them off the cow or feed them out
- He's a long spined, big topped, soft-middled bull that reads well on his carcass traits
- His sire, Bridle Bit Efficient, was selected and named because he was Chad Cook's #1 bull for feed efficiency and their #3 gaining bull that year



ES LH134, Maternal Brother

SONS OF BRIDLE BIT EFFICIENT

77

77 ES MG150

CE SCORE



CE	BW	WW	YW	ADG	MCE	Milk	MWW	Stay	DOC	CW	YG	Marb	BF	REA	API	TI
15	-2.2	81	127	0.29	8	27	67	23	17.3	40.2	-0.18	0.48	-0.033	0.69	164	90
		20	35	35		30	25	30	1	5	35				10	25

REG#4414346
BD: 4/20/24

Hetero Black
Homo Polled
3/4 SM 3/16 AN 1/16 AR

Hook's Eagle 6E
Bridle Bit Efficient J160
Bridle Bit Miss Z202
WS Proclamation E202
ES G150
Hook's Charity 104C

Adj BW	Adj WW	Adj YW
78	647	1166
Adj Scrotal	WDA	130 Day Gain
34.0	3.35	3.27

- This young April bull is really coming on, he's fairly moderate in the pen compared to many of the other bulls that are 1 to 2 months older. But we sure do like the way he's put together, very smooth from end to end like a calving ease bull
- Could go 4-star CE with some caution. He has that look and his dam has never had a large one with a BW ratio of 91 (on BW you want a lower #)
- We really like his dam, G150, she raised our high selling black bull last year, ES Declaration, going to Wildberry Farms



ES LG150, Maternal Brother



78

78 ES MC201

CE SCORE



CE	BW	WW	YW	ADG	MCE	Milk	MWW	Stay	DOC	CW	YG	Marb	BF	REA	API	TI
8	-0.4	80	125	0.28	4	24	64	16	14.9	37.8	-0.16	0.46	-0.010	0.78	133	83
								35		20				30		

REG#4414212
BD: 3/6/24

Red
Homo Polled
3/8 SM 9/16 AR 1/16 AN

Hook's Eagle 6E
Bridle Bit Efficient J160
Bridle Bit Miss Z202
Beckton Epic R397 K
EIR C201
EIR A215

Adj BW	Adj WW	Adj YW
80	659	1198
Adj Scrotal	WDA	130 Day Gain
37.1	3.38	3.42

- When it comes to cow power his dam is a good one here at ES with six calves having a WW ratio of 116. With several sons going to stellar commercial programs
- Note the full brother that went to Richard McQueen in last year's bull sale
- His sire, Efficient, was purchased by Kevin Thompson in Bridle Bit's 2022 sale. We then bought a semen interest from Thompsons to have semen for in herd use



ES LC201, Full Brother

79 ES MH203

CE SCORE



CE	BW	WW	YW	ADG	MCE	Milk	MWW	Stay	DOC	CW	YG	Marb	BF	REA	API	TI
14	-1.0	76	118	0.27	9	23	61	18	16.1	37.8	0.09	0.36	0.029	0.32	142	80
35	35				25			20	15							

REG#4414269
BD: 3/12/24

Hetero Black
Homo Polled
1/2 SM 1/2 AR

WS Proclamation E202
ES Pursuit HD55-2
ES D55
Bieber Make Mimi 7249
EIR H203
EIR F204

Adj BW	Adj WW	Adj YW
83	646	1210
Adj Scrotal	WDA	130 Day Gain
36.4	3.38	3.57

- This ES Pursuit sire group is very consistent in producing cattle that are very practical and easy keeping, the cowboy kind
- He's a long-sided individual that blends in very nice through his shoulder, neck and head
- He's a bull that just keeps getting better every day and can't wait to see what he looks like by March 7



79

80 ES MG175

CE SCORE



CE	BW	WW	YW	ADG	MCE	Milk	MWW	Stay	DOC	CW	YG	Marb	BF	REA	API	TI
9	1.6	84	132	0.30	3	25	67	20	14.2	34.6	-0.13	0.52	-0.027	0.52	147	87
	30	30	35				30	10	30			30			30	35

REG#4414229 • BD: 3/9/24 • **Red Homo Polled 3/4 SM 7/32 AR 1/32 AN**

- There's a lot of reasons this is Adam's favorite red bull mainly it's his stunning presence as he strolls around the lot, you always find yourself taking a second look
- The best part is he's still on the come, had a YW ratio of 108 and is the 3rd highest gaining red bull since weaning
- Look at the supporting photos, his dam knows how to raise the good ones with a 104 WW ratio on four calves, all bulls with the other three landing at the great homes of Fenton in OK, Martin in NE and VanHerde in SD



ES LG175, Maternal Brother



ES JG175, Maternal Brother



80

WS Proclamation E202
ES Pursuit HD55-2
ES D55
Leachman Cadillac L025A
ES G175
ES X75

Adj BW	Adj WW	Adj YW
100	643	1258
Adj Scrotal	WDA	130 Day Gain
41.7	3.52	3.87

81 ES MH98

CE SCORE



CE	BW	WW	YW	ADG	MCE	Milk	MWW	Stay	DOC	CW	YG	Marb	BF	REA	API	TI
9	3.0	89	140	0.32	4	23	67	17	14.9	34.6	-0.36	0.16	-0.081	0.81	134	84
		20	15	15			30		15	35			30			

REG#4414291
BD: 3/17/24

Red
Homo Polled
Purebred SM

WS Proclamation E202
ES Pursuit HD55-2
ES D55
CDI Perspective 238A
ES H98
ES F133

Adj BW	Adj WW	Adj YW
92	637	1168
Adj Scrotal	WDA	130 Day Gain
41.7	3.24	3.35

- When I look at these ES Pursuit sons, I can't help to think what it would be like to have a whole pen of steers to feed out just like them
- He has a maternal sister who also has a red bull in the sale, ES MK8 (Lot 93) he is one powerful bull. His maternal great granddam was one of the thickest cows to ever walk here, more than once we let her out the side door of the chute
- Dam has a WW ratio of 106 on her first two calves



81



82 ES MG176

CE SCORE



CE	BW	WW	YW	ADG	MCE	Milk	MWW	Stay	DOC	CW	YG	Marb	BF	REA	API	TI
8	3.5	76	115	0.24	3	25	62	18	17.0	29.4	-0.25	0.33	-0.042	0.71	125	75
								20	10		35					

REG#4414285
BD: 3/14/24

Red
Homo Polled
3/4 SM 7/32 AR 1/32 AN

WS Proclamation E202
ES Pursuit HD55-2
ES D55
Leachman Cadillac L025A
ES G176
ES X75

Adj BW	Adj WW	Adj YW
97	619	1005
Adj Scrotal	WDA	130 Day Gain
37.5	2.87	2.44



ES JG176, Maternal Brother



ES K72, Maternal Sister

- This guy and lot 80 MG175 have a lot in common, both are sired by ES Pursuit and their dams are full sisters
- Their sire, ES Pursuit was our high selling bull going to Doug Bichler back in 2021, his calves have not disappointed us here at ES
- This guy has a good set of wheels with a lot of flex in his rear pasterns and a CE appearance

83 ES MD55-1



CE SCORE



CE	BW	WW	YW	ADG	MCE	Milk	MWW	Stay	DOC	CW	YG	Marb	BF	REA	API	TI
6	4.1	92	142	0.32	4	25	71	8	12.4	36.1	-0.32	0.00	-0.046	0.99	91	76
		10	15	25		35	15				20			10		

GW Movin On 183C
GW Major Move 590E
GW Miss Predestined 147Y
CDI Authority 77X

ES D55
ES Z85

Adj BW	Adj WW	Adj YW
77 ET	682	1343
Adj Scrotal	WDA	130 Day Gain
37.8	3.65	4.17

REG#4414109 • BD: 2/6/24 • **Red Homo Polled 5/8 SM 7/32 AR 5/32 AN**



- If you're looking for a big powerful red bull, your search may be over. This dark cherry red stud is one of the bigger framed red bulls in the offering, #4 bull for PWG
- He is a full sib to one of the best, most consistent flushes we have had here with a bred heifer going to Sloup Simmentals and Jason Lee last year, they were beautiful. Four full brothers led the red bull division two years ago, they had a lot of friends
- His dam, D55, is a square made power cow with a very nice udder. She's also the dam of Doug Bichler's ES Pursuit bull



ES KD55-4, Maternal Brother



ES KD55-1, Maternal Brother



ES K145, Maternal Sister

84 ES MG11



CE SCORE



CE	BW	WW	YW	ADG	MCE	Milk	MWW	Stay	DOC	CW	YG	Marb	BF	REA	API	TI
13	-0.4	84	132	0.30	7	29	71	19	12.6	34.9	-0.36	0.50	-0.044	1.12	166	95
	25	30	25	20	35	15	15	15		30		15		10	10	15

REG#4414271
BD: 3/12/24

Red
Homo Polled
Purebred SM

Hook's Full Figures 11F
WS Full House 36K
WS Harper H98
GW Major Move 590E
ES G11
ES E18

Adj BW	Adj WW	Adj YW
89	676	1219
Adj Scrotal	WDA	130 Day Gain
36.9	3.43	3.42



ES LG11, Maternal Brother



- He's a bull I like, and I like a lot, there's a lot of meat and muscle in this guy. But for as thick as he is he get around awfully well
- His dam may have just unlatched the gate to the donor pen as there are five generations of cows that have put a lot of top end bulls across the auction block here at ES. Including his maternal brother who was our high selling red bull in last year's sale to KBHR in ND
- We want to be up front here and if disposition is a main concern, this may not be the bull for you. Get in the pen and check him out and if he'll work for your operation, he's a hell of a bull

SONS OF WS HOLLYWOOD 79H

85 ES MD111



Hook's Empire 61E
WS Hollywood 79H
WS Electra E88
ES ZX75
ES D111
EIR X226

Adj BW	Adj WW	Adj YW
85	612	1191
Adj Scrotal	WDA	130 Day Gain
35.4	3.38	3.65

CE	BW	WW	YW	ADG	MCE	Milk	MWW	Stay	DOC	CW	YG	Marb	BF	REA	API	TI
13	-0.2	88	136	0.30	6	21	65	18	13.3	36.6	-0.22	0.24	-0.041	0.71	138	85
		20	20	35				20								

REG#4414270 • BD: 3/12/24 • Red Homo Polled 3/4 SM 1/4 AR

- His dam is no stranger to raising calves that end up in the front pen on sale day. A heifer sold last year that had a set of twin bulls on that went to Oklahoma and her H62 daughter is doing a wonderful job for Lawrence Franzen in Nebraska
- I put a lot of high marks on this guy in the lot from his nice front 1/3 to his soft deep side and back to his heavy muscled rear end
- With progeny like this it's easy to see why WS Hollywood has been siring sale toppers around the country



ES H62, Maternal Sister



ES K37, Maternal Sister



85

86 ES MC72



CE	BW	WW	YW	ADG	MCE	Milk	MWW	Stay	DOC	CW	YG	Marb	BF	REA	API	TI
12	1.8	89	140	0.32	5	25	69	20	7.6	39.3	-0.31	0.15	-0.055	0.94	145	86
		20	15	15			25	10		20				35	35	35

REG#4414319
BD: 3/30/24

Red
Homo Polled
Purebred SM

Hook's Empire 61E
WS Hollywood 79H
WS Electra E88
CDI Authority 77X
ES C72
ES Z87

Adj BW	Adj WW	Adj YW
93	711	1213
Adj Scrotal	WDA	130 Day Gain
38.4	3.45	3.16

- If you like him any at all from a side view, be sure to find him in the pen sale day and get a rear-view angle, if you do, you'll put him on your watch list
- Top WW bull with a ratio of 111 then maintained a YW ratio of 104
- Here's where it gets really exciting, his dam, C72 has had seven bulls in a row and each year we mark them awfully high on the list. She has an outstanding YW ratio of 108 on those seven bulls



ES LC72, Maternal Brother



86

ES JC72, Maternal Brother



87 ES MX229



CE	BW	WW	YW	ADG	MCE	Milk	MWW	Stay	DOC	CW	YG	Marb	BF	REA	API	TI
16	-2.8	70	107	0.23	8	22	57	19	10.3	23.2	-0.05	0.24	-0.004	0.32	140	77
		20	15		35			15								

REG#4414231
BD: 3/9/24

Red
Homo Polled
1/2 SM 1/2 AR

Hook's Empire 61E
WS Hollywood 79H
WS Electra E88
OHRR Dakota Copper 29K
EIR X229
EIR M211

Adj BW	Adj WW	Adj YW
77	612	1111
Adj Scrotal	WDA	130 Day Gain
37.7	3.13	3.16

- His dam is 15 years old, and we are going out on a limb and say this is her best one yet
- We really like the Hollywood sire group; they are stout and thick and have a great physical quality
- If you have some Red Angus in your herd, I think incorporating a little WS Hollywood in the herd would be a homerun



87

88 ES MJ143

CE SCORE



IR Imperial D948
Hook's Hercules 209H
CLRS Elated 729E
W/C Fort Knox 609F
ES J143
ES D55

CE	BW	WW	YW	ADG	MCE	Milk	MWW	Stay	DOC	CW	YG	Marb	BF	REA	API	TI
4	4.8	97	146	0.31	2	24	72	16	15.8	54.0	-0.30	0.39	-0.050	1.12	138	91
		10	10	15			15		10	3		20		10		20

REG#4414264 • BD: 3/12/24 • Red Baldy Homo Polled Purebred SM

Adj BW	Adj WW	Adj YW
113	694	1224
Adj Scrotal	WDA	130 Day Gain
36.2	3.35	3.35



88

- This bull came into the picture pen and hit the pose and out he went. Trust me, those kind seem to be far and few in between. This guy reminds me a lot of his maternal sire, WC Fort Knox, stout, thick with a big ol real bumper. I've always said some cattle have it and some don't in the picture pen and Fort Knox cattle have it
- This guy hit the scales pretty good rationing 108 for WW and 105 for YW
- His granddam is our D55 cow, the mother of the great Major Move flush with a red son in this sale. She is also the mother of ES Pursuit, working for Doug Bichler



ES D55, Grandam

89 ES MF100

CE SCORE



IR Imperial D948
Hook's Hercules 209H
CLRS Elated 729E
CDI Authority 77X
ES F100
ES Y60

CE	BW	WW	YW	ADG	MCE	Milk	MWW	Stay	DOC	CW	YG	Marb	BF	REA	API	TI
12	-1.1	79	119	0.25	4	17	56	17	13.8	33.3	-0.18	0.23	-0.026	0.68	144	83
		15						35	25	35					35	

REG#4414315 • BD: 3/30/24 • Red Homo Polled Purebred SM

Adj BW	Adj WW	Adj YW
76	566	1067
Adj Scrotal	WDA	130 Day Gain
34.9	3.05	3.16



89

- If you're looking for a moderate, stout, super thick red bull that's very correct on his wheels, here's our recommendation
- Granddam is our Y60 cow who is no stranger in bringing bulls like this through the sale ring year after year
- His 77lb BW and G+ logo make him a very practical choice



Hook's Hercules, Sire

90 ES MK63-1

CE SCORE



IR Imperial D948
Hook's Hercules 209H
CLRS Elated 729E
WS Gadget 40G
RFS Luna K63
WS Electra E88

Adj BW	Adj WW	Adj YW
65 ET	577	1141
Adj Scrotal	WDA	130 Day Gain
35.2	3.06	3.54

CE	BW	WW	YW	ADG	MCE	Milk	MWW	Stay	DOC	CW	YG	Marb	BF	REA	API	TI
14	-1.5	93	146	0.33	8	21	68	20	17.9	52.0	-0.22	0.57	-0.048	0.87	179	102
20	10	15	10	10	20		30	10	3	4		10			3	3

REG#4414082 • BD: 1/22/24 • **Red Homo Polled Purebred SM**

- We've been patiently waiting two years to be able to offer these two powerful red bulls for your appraisal. They are the product of a small embryo package we purchased in our quest for some different bloodlines. Full disclosure, I was hoping for at least one heifer
- RFS Luna is arguably the best and most powerful daughter of Electra to date. At over +100 for WW while still maintain a top 10% ranking for CE & BW. She represents the kind of spread genetics the industry is striving for
- With all the power and performance these two offer, you would never guess they only started out at 66 & 72lbs. They are both impressive but MK63-3 (Lot 91) was actually the #1 bull for PWG at 4.4 lbs/day. These guys only get better when you look at their genomic profile with many categories in the top 10% of the breed
- If you're in the market for some powerful red bulls these two may be worth the trip alone



90

Full Brothers

91 ES MK63-3

CE SCORE



CE	BW	WW	YW	ADG	MCE	Milk	MWW	Stay	DOC	CW	YG	Marb	BF	REA	API	TI
12	0.1	103	158	0.34	7	21	73	20	16.9	54.3	-0.19	0.45	-0.048	0.80	169	103
30	2	3	10			15	15	10	5	3		15			10	3

REG#4414090
BD: 1/24/24

Red
Homo Polled
Purebred SM

IR Imperial D948
Hook's Hercules 209H
CLRS Elated 729E
WS Gadget 40G
RFS Luna K63
WS Electra E88

Adj BW	Adj WW	Adj YW
71 ET	587	1288
Adj Scrotal	WDA	130 Day Gain
35.3	3.40	4.40



91

92 ES MK15

CE SCORE



CE	BW	WW	YW	ADG	MCE	Milk	MWW	Stay	DOC	CW	YG	Marb	BF	REA	API	TI
11	0.4	92	148	0.35	5	25	71	13	17.3	52.8	-0.18	0.41	-0.041	0.81	137	91
		10	10	10			15		5	10				25		20

REG#4414174
BD: 2/19/24

Red
Homo Polled
3/4 SM 1/4 AR

IR Imperial D948
Hook's Hercules 209H
CLRS Elated 729E
CDI Perspective 238A
ES K15
EIR H209

Adj BW	Adj WW	Adj YW
93	710	1289
Adj Scrotal	WDA	130 Day Gain
38.7	3.43	3.68



92

- If your calves grow too fast and weigh too much when you sell them, then you may want to look for a different bull because all indicators say MK15 is going to add performance
- Has WW & YW ratios of 110 & 110 and WW & YW EPD's that rank him in the top 10% of the breed
- Use this dark red bull on a set of Red Angus cross cows and you'll be smiling all the way to the bank or better yet imagine the impact for years to come on his replacement females

93 ES MK8

CE SCORE



CDI Secret Agent 407C
Redhill Burley 99J
Redhill W107 153X 257B
ES Statement GZ33

ES K8
ES H98

Adj BW	Adj WW	Adj YW
104	745	1354
Adj Scrotal	WDA	130 Day Gain
38.7	3.51	3.83

CE	BW	WW	YW	ADG	MCE	Milk	MWW	Stay	DOC	CW	YG	Marb	BF	REA	API	TI
9	3.3	115	182	0.42	3	29	86	15	6.6	52.5	-0.30	0.23	-0.066	0.99	145	102
		1	1	1		15	1			4				25	35	4

REG#4414144 • BD: 2/10/24 • Red Homo Polled Purebred SM



- If you're looking for our #1 performing red bull, here he is. He has a whopping 116 ratio for both WW & YW, then a quick glance at his EPD's and he is in the top 1% for WW, YW, ADG and MWW
- He's one of the larger framed bulls in the pen so if it's lbs you want, he's the man
- He's a fun bull to put your eyes on as we've watched him close lately and I can't say there's anything I would change. Even his attitude is pleasant

SONS OF REDHILL BURLEY 99J**94 ES MK63**

CE SCORE



CE	BW	WW	YW	ADG	MCE	Milk	MWW	Stay	DOC	CW	YG	Marb	BF	REA	API	TI
15	-0.9	87	130	0.26	8	25	68	16	13.4	36.2	-0.45	0.37	-0.089	1.06	157	94
		15	25	30		15	35	25		30	30	25	30	15	20	15

REG#4414152
BD: 2/12/24

Red
Homo Polled
Purebred SM

CDI Secret Agent 407C
Redhill Burley 99J
Redhill W107 153X 257B
KBHR All American G104
ES K63
ES G20

Adj BW	Adj WW	Adj YW
80	633	1097
Adj Scrotal	WDA	130 Day Gain
36.8	2.84	2.93

- Another trouble-free Burley son with only a 74lb birth weight
- Holy smokes, scan across his EPD's, an impressive feat with 14 categories in the top 30% of the breed
- What a job is red PB would do on a straight set of Red Angus cows. Those 1/2 blood calves would be highly sought after

**95 ES MK48**

CE SCORE



CE	BW	WW	YW	ADG	MCE	Milk	MWW	Stay	DOC	CW	YG	Marb	BF	REA	API	TI
16	-1.2	87	135	0.30	7	25	68	19	10.4	37.8	-0.28	0.37	-0.053	0.82	164	94
		10	15	25		20	30			25				25		15

REG#4414163
BD: 2/14/24

Red
Homo Polled
Purebred SM

CDI Secret Agent 407C
Redhill Burley 99J
Redhill W107 153X 257B
GW Major Move 590E
ES K48
ES F19

Adj BW	Adj WW	Adj YW
81	559	1124
Adj Scrotal	WDA	130 Day Gain
36.4	2.87	3.57

- His sire, Burley, is one of the most universal bulls we use in both red and black. We breed him to heifers, he works, yet has enough growth, maternal and carcass that you want to use him on cows also
- Look at his CE & BW EPD's compared to his WW & YW EPD's, they are all in the top 25% or better, that's what we're looking for
- Out of a GW Major Move cow. He's a bull we used about eight years ago then went back to after we saw how nice his daughters were



96 ES MG18

CE SCORE



Hook's Xpectation 36X
 CDI Maverick 335B
 CDI Ms Red Iron 7Z
 Leachman Cadillac L025A

ES G18
 ES E78

Adj BW	Adj WW	Adj YW
103	666	1143
Adj Scrotal	WDA	130 Day Gain
36.8	3.23	3.01

CE	BW	WW	YW	ADG	MCE	Milk	MWW	Stay	DOC	CW	YG	Marb	BF	REA	API	TI
9	3.4	84	131	0.29	3	27	69	23	9.8	35.9	-0.37	0.25	-0.050	1.09	136	79
		25	30			25	20	1			10			4		

REG#4414249 • BD: 3/11/24 • **Red Homo Polled 3/4 SM 5/32 AR 1/16 AN 1/32 CS**

- The bull turned a few heads when he came in the picture pen with his stunning appearance and structural soundness. He's all bull packed full of red meat
- Physically we just don't see any holes in this stud. On paper he's in the top 1% of the breed for stayability and top 4% for REA
- Has a Ww ratio of 104 and his dam has a WW ratio of 107 on four calves. This guy is highly recommended by Nick. Check out his potential on the female side with his maternal sister, ES L108 (Lot 163) in the bred heifer division



SONS OF KBHR CHARGER K102

97 ES MH70


Mr SR Red October G1761
KBHR Charger K102
WS Electra E88
Hook's Full Figures 11F
ES H70
ES D72

Adj BW	Adj WW	Adj YW
79	581	1100
Adj Scrotal	WDA	130 Day Gain
34.6	3.08	3.27

CE	BW	WW	YW	ADG	MCE	Milk	MWW	Stay	DOC	CW	YG	Marb	BF	REA	API	TI
17	-0.9	91	142	0.32	9	25	70	18	12.7	32.4	-0.42	0.80	-0.079	1.00	191	108
4	15	15	15	15	10	35	20	25			35	2		25	1	1

REG#4414220 • BD: 3/7/24 • Red Homo Polled Purebred SM



- He's a no holes kinda of a bull that offers a trouble-free package
- Check out his stellar EPD profile which puts him in the top 15% of the breed in economic traits. He offers those true curve bending #'s we all strive for, Low BW then high growth
- Sired by KBHR Charger who is out of one of the best red cows in the breed, Electra E88



ES LH70, Maternal Brother

98 ES MK91


Mr SR Red October G1761
KBHR Charger K102
WS Electra E88
HSF Cardinal 133G
ES K91
ES D55

Adj BW	Adj WW	Adj YW
76	607	1125
Adj Scrotal	WDA	130 Day Gain
36.7	2.92	3.27


 REG#4414188
BD: 2/28/24

 Red
Homo Polled
Purebred SM

- If you've been sitting back waiting for a calving ease red bull, you'd better put your coffee down and get your hand in the air because here he comes
- Mahdi blessed him with an ACE logo and all the other indicators point to a CE prospect also. Calving Ease & BW EPD's in the top 1% and 2% of the breed, low actual birth weight and lighter bone structure
- We also had great success calving KBHR Charger on heifers last spring

99 ES MG33


Leachman Decree X936D
CLRS Jefferson 951J
M4 Ms Desire 911G
Leachman Cadillac L025A
ES G33
ES E129

Adj BW	Adj WW	Adj YW
97	722	1090
Adj Scrotal	WDA	130 Day Gain
36.4	3.12	2.33



ES LG33, Maternal Brother



ES J8, Maternal Sister

 REG#4414272
BD: 3/12/24

 Red
Homo Polled
5/8 SM 7/32 AR
5/32 AN

- Came off the cow heavy with a WW ratio of 112
- Backed by a solid cow family that traces back four generations to the most prolific Red Angus cow we had, T202
- His maternal sibs have been spot on just take a peek at the supporting photos

100 JK Boulder 466

REG#20949180
BD: 1/9/224

Purebred Angus

CED	BW	WW	YW	MM
+3	+3.2	+85	+143	+33
66%	70%	4%	13%	5%

K C F Bennett Boulder
Lazy TV Boulder 9338
Lazy TV Platinum A320
High Point Ring of Fire 5071
JK Gammer 925
JK Gammer 656

BW	Adj WW	Adj YW
91	832	1453
Scrotal		
40.68		

Larger framed Boulder son that has the size and profile that should move anyone's herd in the right direction. Ratioed 111 WW and 106 YW.

SONS OF LAZY TV BOULDER 9338

**101 JK Boulder 469**

CED	BW	WW	YW	MM
+10	+1.1	+81	+142	+18
59%	82%	6%	6%	85%

REG#20949183
BD: 1/9/224

Purebred Angus

K C F Bennett Boulder
Lazy TV Boulder 9338
Lazy TV Platinum A320
JK High Point 745
JK Blackbird 033
JK Blackbird 814

BW	Adj WW	Adj YW
88	770	1381
Scrotal		
40.59		

Heifer Bull. If you looking to put a big middle and some flashy look in some calves this is the guy. Strong topped and stout out of a daughter of the donor Blackbird 814.

**102 JK Boulder 457**

CED	BW	WW	YW	MM
+2	+2.6	+81	+149	+18
80%	79%	8%	1%	79%

REG#21149679
BD: 1/7/224

Purebred Angus

K C F Bennett Boulder
Lazy TV Boulder 9338
Lazy TV Platinum A320
High Point Ring of Fire 5071
JK Black Flame 933
J K Black Flame 136

BW	Adj WW	Adj YW
100	721	1460
Scrotal		
36.62		

Big framed stout bull from a whale of a cow. Been one of the favorites all summer.



103 JK Boulder 493REG#20949204
BD: 1/17/224

Purebred Angus

CED	BW	WW	YW	MM
+10	+1.0	+91	+148	+24
63%	81%	2%	9%	41%

K C F Bennett Boulder
 Lazy TV Boulder 9338
 Lazy TV Platinum A320
 Kesslers Commodore 6516
 JK Miss Jilt 118
 JK Miss Jilt 928

BW	Adj WW	Adj YW
95	847	1513
Scrotal		
39.43		



Big framed boulder that has really poured it on after weaning. Ratioed 113 WW and 111 YW.

**SONS OF
LAZY TV
BOULDER
9338**

**104 JK Boulder 483**

CED	BW	WW	YW	MM
+7	+1.1	+70	+115	+20
44%	37%	37%	73%	81%

REG#20949194
BD: 1/13/224Purebred
Angus

K C F Bennett Boulder
 Lazy TV Boulder 9338
 Lazy TV Platinum A320
 Varilek Element 7112 03
 JK Gammer 069
 J K Gammer 283

BW	Adj WW	Adj YW
88	761	1404
Scrotal		
42.22		

Recommended for larger framed heifers or cows. Bigger Boulder son that should stamp a set of calves with uniformity and look that buyers and feeders will love.

**105 JK Boulder 487**

CED	BW	WW	YW	MM
+17	-2.6	+62	+115	+24
4%	7%	56%	31%	61%

REG#20949198
BD: 1/14/224Purebred
Angus

K C F Bennett Boulder
 Lazy TV Boulder 9338
 Lazy TV Platinum A320
 Kesslers Commodore 6516
 JK Georgina Pride 114
 JK Weigh Up 924

BW	Adj WW	Adj YW
76	745	1380
Scrotal		
40.84		

Heifer Bull. Moderate framed, thick made and built to be a heifer bull.

106 JK Boulder 4117

CED	BW	WW	YW	MM
+7	+1.8	+76	+128	+27
93%	99%	16%	27%	32%

REG#20949221
BD: 2/8/24

Purebred
Angus

K C F Bennett Boulder
Lazy TV Boulder 9338
Lazy TV Platinum A320
High Point Ring of Fire 5071
JK Black Flame 950
JK Black Flame 660

BW	Adj WW	Adj YW
86	797	1394
Scrotal		
36.89		



106

Deep sided, moderate bull out of a high producing pathfinder dam.

SONS OF WAR ACCOMPLISHMENT J4002 ET**107 JK Accomplishment 452**

REG#20949170
BD: 1/5/224

Purebred Angus

CED	BW	WW	YW	MM
+2	+5.0	+99	+165	+19
88%	98%	2%	6%	73%

Sitz Accomplishment 720F
WAR Accomplishment J4002 ET
WAR Tiger C030 A371
Ponca Creek Territory 1180
JK Enchantress 068
JK Enchantress 786

BW	Adj WW	Adj YW
110	873	1500
Scrotal		
40.71		

If you sell them by the pound this is the one for you. He has the size and power to really set off the scales. Ratioed 117 WW 110YW.



107

108 JK Accomplishment 402

CED	BW	WW	YW	MM
+8	-1.3	+67	+123	+33
39%	24%	32%	17%	6%

REG#20949146
BD: 12/20/23

Purebred
Angus

Sitz Accomplishment 720F
WAR Accomplishment J4002 ET
WAR Tiger C030 A371
Jindra Grand Banks
JK Blackbirds Lady 158
JK Blackbird's Lady 735

BW	Adj WW	Adj YW
74	715	1312
Scrotal		
38.79		



108

Heifer Bull. Smooth made nice fronted heifer bull.

109 JK Accomplishment 454REG#20949171
BD: 1/6/224

Purebred Angus

CED	BW	WW	YW	MM
+1	+1.6	+73	+125	+26
77%	58%	30%	51%	31%

Sitz Accomplishment 720F
 WAR Accomplishment J4002 ET
 WAR Tiger C030 A371
 Varilek Element 7112 03
 JK Miss Queen 085
 JK Miss Queen 779

BW	Adj WW	Adj YW
86	744	1378
Scrotal		
36		



Moderate easy keeping kind, the consistency from the Accomplishment bull is really showing from the bulls into the daughters.

110 JK Accomplishment 450

CED	BW	WW	YW	MM
+3	+2.6	+76	+129	+32
63%	60%	31%	41%	11%

REG#20949168
BD: 1/5/224

Purebred Angus

Sitz Accomplishment 720F
 WAR Accomplishment J4002 ET
 WAR Tiger C030 A371
 S A Arsenal 155
 JK Blackcap Bessie 196
 JK Blackcap Bessie 798

BW	Adj WW	Adj YW
90	788	1396
Scrotal		
40.3		



Smooth made small headed Accomplishment son. Ratioed 105WW and 102YW.

111 JK Accomplishment 461

CED	BW	WW	YW	MM
+5	+1.3	+87	+152	+20
47%	35%	5%	9%	67%

REG#20949175
BD: 1/8/224

Purebred Angus

Sitz Accomplishment 720F
 WAR Accomplishment J4002 ET
 WAR Tiger C030 A371
 JK High Point 745
 JK Soldierette 106
 J K Soldierette 525

BW	Adj WW	Adj YW
86	758	1371
Scrotal		
35.4		



Smooth made easy calving son of Accomplishment out of a full sibling to Prairie Fire 005.

112 JK Accomplishment 479REG#20949190
BD: 1/11/224

Purebred Angus

CED	BW	WW	YW	MM
+5	+1.8	+75	+125	+34
10%	12%	48%	78%	4%

Sitz Accomplishment 720F
 WAR Accomplishment J4002 ET
 WAR Tiger C030 A371
 Ponca Creek Territory 1180
 JK Star Design 075
 R H Star Design 784

BW	Adj WW	Adj YW
100	851	1502
Scrotal		
37.66		

Thick, stout, Rugged made cowboy kind of bull here. Out of an awesome female that is definitely going pathfinder this year. Ratioed 114 WW and 110 YW.



112

113 JK Accomplishment 484

CED	BW	WW	YW	MM
+8	+3.2	+90	+166	+24
9%	60%	14%	4%	64%

REG#20949195
BD: 1/13/224

Purebred Angus

Sitz Accomplishment 720F
 WAR Accomplishment J4002 ET
 WAR Tiger C030 A371
 JK High Point 745
 JK Erica 173
 JK Erica 907

BW	Adj WW	Adj YW
97	796	1487

Scrotal
35.81

Accomplishment son out of a High Point 745 dam, if you feed your calves you will love the appetite and the rate of gain is this cross.



113

114 JK Accomplishment 4104

CED	BW	WW	YW	MM
+9	+1.1	+67	+125	+32
16%	29%	73%	49%	7%

REG#20949211
BD: 1/31/224

Purebred Angus

Sitz Accomplishment 720F
 WAR Accomplishment J4002 ET
 WAR Tiger C030 A371
 S A Arsenal 155
 JK Queen Idelette 165
 ME Queen Idelette 338

BW	Adj WW	Adj YW
85	759	1402

Scrotal
34.13

Moderate framed, soggy, calving ease son of Accomplishment from a really good second calf Arsenal daughter.



114

JK High Point 329, \$10,000 Maternal Brother

115 JK Accomplishment 480

REG#20949191
BD: 1/12/224
Purebred Angus

CED	BW	WW	YW	MM
+1	+2.4	+84	+148	+19
54%	50%	15%	33%	63%

Sitz Accomplishment 720F
WAR Accomplishment J4002 ET
WAR Tiger C030 A371
A A R Ten X 7008 S A
JK Erica Lass 544
J K Erica Lass 0111

BW	Adj WW	Adj YW
87	801	1505
Scrotal		
38.02		



Big topped
Accomplishment son
out of a 10 year old
proven dam.

SONS OF JK HIGH POINT 745**116 JK High Point 414**

CED	BW	WW	YW	MM
+6	+1.8	+92	+153	+19
46%	43%	2%	9%	82%

REG#20949151
BD: 12/26/23

Purebred
Angus

High Point Ring of Fire 5071
JK High Point 745
J K Blackbird 408
Basin Payweight 1682
JK Blackcap May 204
S A V Blackcap May 1639

BW	Adj WW	Adj YW
92	802	1399
Scrotal		
38.98		

Easy calving High Point 745 son.



JK High Point 745, Sire

117 JK High Point 407

CED	BW	WW	YW	MM
+4	+0.9	+68	+128	+25
67%	49%	70%	14%	66%

REG#21003306
BD: 12/23/23

Purebred
Angus

High Point Ring of Fire 5071
JK High Point 745
J K Blackbird 408
Nelsons Meatmaker S601
J K Candy Rose 092
J K Candy Rose 731

BW	Adj WW	Adj YW
80 ET	716	1337
Scrotal		
37.55		

From High Point 745 and Candy Rose 092, keep the daughters they will be front pasture kind.

SONS OF JK HIGH POINT 745

118 JK High Point 423

REG#21003311
BD: 12/30/23

Purebred Angus

CED	BW	WW	YW	MM
+5	+1.8	+70	+123	+26
62%	66%	56%	45%	58%

Stout made bull from the powerhouse donor JK Forever Lady 311.

High Point Ring of Fire 5071
JK High Point 745
J K Blackbird 408
S A V Mandan 5664
JK Forever Lady 311
Three Trees Forever Lady0487

BW	Adj WW	Adj YW
103 ET	775	1415
Scrotal		
40.61		



JK High Point 330, \$10,500
Full Brother



118

119 JK High Point 444

CED	BW	WW	YW	MM
+8	+1.0	+90	+157	+20
20%	29%	1%	4%	78%

REG#20949225
BD: 1/4/224

Purebred
Angus

High Point Ring of Fire 5071
JK High Point 745
J K Blackbird 408
S A Arsenal 155
JK Star Design 252
JK Star Design 905

TWIN • Easy calving and high growth from this 745 son.

BW	Adj WW	Adj YW
63	762	1400
Scrotal		
38.77		



119

120 JK High Point 416

CED	BW	WW	YW	MM
+6	+1.4	+79	+142	+26
79%	85%	10%	5%	28%

REG#21003309
BD: 12/27/23

Purebred
Angus

High Point Ring of Fire 5071
JK High Point 745
J K Blackbird 408
Nelsons Meatmaker S601
J K Candy Rose 092
J K Candy Rose 731

Bigger framed, stout, deep and soft made. Will add a lot of capacity and fleshing ability to a set of calves without sacrificing size.

BW	Adj WW	Adj YW
93 ET	786	1447
Scrotal		
38.27		



120

SONS OF WAR COMPLETE J509

121 JK Complete 405

REG#20949148

BD: 12/23/23

Purebred Angus

CED	BW	WW	YW	MM
+6	+3.1	+79	+133	+37
51%	76%	14%	19%	4%

Woodhill Complete A130-C2
 WAR Complete J509
 WAR Maria G531
 High Point Ring of Fire 5071
 JK Soldierette 9105
 J K Soldierette 265

BW	Adj WW	Adj YW
86	889	1425
Scrotal		
36.64		



TWIN • Big Framed Complete son that ratioed 119 WW and 105 YW. From our best Soldierette cow family.



122 JK Complete 431

CED	BW	WW	YW	MM
+0	+3.5	+84	+144	+26
83%	84%	6%	7%	46%

REG#20949157

BD: 1/1/224

Purebred Angus

Woodhill Complete A130-C2
 WAR Complete J509
 WAR Maria G531
 J & J Recharge 40
 JK Erica 907
 JK Erica 529

BW	Adj WW	Adj YW
87	754	1391
Scrotal		
34.68		

Moderate framed, quiet, and out of a pathfinder dam.



123 JK Complete 440

CED	BW	WW	YW	MM
+5	+2.5	+79	+119	+23
84%	82%	10%	62%	72%

REG#20949161

BD: 1/3/224

Purebred Angus

Woodhill Complete A130-C2
 WAR Complete J509
 WAR Maria G531
 Varilek Element 7112 03
 JK Soldierette 963
 JK Soldierette 740

BW	Adj WW	Adj YW
89	800	1278
Scrotal		
34.99		

Moderate framed, easy fleshing, and out a highly maternal and fertile cow family.

124 JK Complete 456

REG#20949172
BD: 1/6/224

Purebred Angus

CED	BW	WW	YW	MM
-2	+4.0	+75	+127	+26
98%	97%	24%	29%	74%

Cow bull that should sire some awesome feeders and still leave you some beautiful females.



Woodhill Complete A130-C2
WAR Complete J509
WAR Maria G531
Varilek Element 7112 03
JK Forever Lady 087
J K Forever Lady 311

BW	Adj WW	Adj YW
107	774	1436
Scrotal		
37.5		

125 JK Complete 451

CED	BW	WW	YW	MM
+10	+2.0	+79	+130	+31
42%	70%	20%	34%	26%

REG#20949169
BD: 1/5/224

Purebred Angus

Woodhill Complete A130-C2
WAR Complete J509
WAR Maria G531
JK High Point 745
JK Blackcap Pride 029
JK Blackcap Pride 882

Complete son of Complete J509 out of the dam of our high seller last year to Spencer Kieffe.

BW	Adj WW	Adj YW
92	755	1353

Scrotal
33.96



JK Big Valley 360, \$20,000
Maternal Brother

**126 JK Complete 481**

CED	BW	WW	YW	MM
+1	+3.9	+84	+136	+25
98%	100%	1%	9%	52%

REG#20949192
BD: 1/12/224

Purebred Angus

Woodhill Complete A130-C2
WAR Complete J509
WAR Maria G531
Ponca Creek Territory 1180
JK Erica 074
J K Erica 131

Smooth shouldered bigger profiled Complete J509 son from the Erica cow family that has shown great longevity and fertility.

BW	Adj WW	Adj YW
101	806	1398

Scrotal
34.19





127 JK Craftsman 413

CED	BW	WW	YW	MM
+3	+2.6	+73	+114	+34
56%	77%	20%	64%	5%

REG#21071371
BD: 12/26/23

Purebred
Angus

Sitz Resilient 10208
Connealy Craftsman
Black Cathy of Conanga 8521
Bushs the Duke 740
JK Blackbird 814
Mohnen Blackbird 1025

Craftsmen by the pathfinder donor Blackbird 814, has a little more carcass traits without sacrificing the growth and soundness. The heifers from this cross look to be phenotypic standouts, keep all the daughters.

BW	Adj WW	Adj YW
90 ET	806	1393

Scrotal
38.46



JK Boulder 288, \$20,000
Maternal Brother



128 JK Weigh Up 420

CED	BW	WW	YW	MM
+3	+2.4	+87	+155	+33
93%	93%	4%	3%	23%

REG#21003310
BD: 12/29/23

Purebred
Angus

Plattmeyer Weigh Up K360
J&J Weigh Up 294
J & J Miss Georgina 294
S A Broadside 1411
J K Blackbird 408
J K Ms Blackbird 018

Moderate framed, docile, and deep sided 294 son from the dam of JK High Point 745.

BW	Adj WW	Adj YW
81 ET	708	1319

Scrotal
39.83



JK Reflex 225, \$13,000 Maternal Brother



129 JK Freedom 411

CED	BW	WW	YW	MM
+9	+0.4	+70	+124	+22
30%	41%	37%	33%	71%

REG#21069771
BD: 12/25/23

Purebred
Angus

G A R Proactive
G A R Freedom
RWA Fruition W2025
Nelsons Meatmaker S601
J K Candy Rose 092
J K Candy Rose 731

The only bull calf we got from the 092 and GAR Freedom Flush. If your looking for a little extra marbling this is the guy for you.

BW	Adj WW	Adj YW
96 ET	714	1277

Scrotal
38.36



130 JK True Grit 429

CED	BW	WW	YW	MM
+16	-1.4	+68	+114	+27
10%	23%	51%	64%	68%

REG#21073602
BD: 1/1/224

Purebred
Angus

Freys Cowboy Logic
FREYS True Grit
FAR Fair Lady 8094
J&J Weigh Up 294
JK Blackbird 218
J K Blackbird 408

Heifer Bull. This is the sure fire sleep all night heifer bull.

BW	Adj WW	Adj YW
66	764	1330

Scrotal
39.17

131 JK Pathfinder 4108

CED	BW	WW	YW	MM
+6	+0.7	+78	+125	+36
62%	48%	5%	25%	8%

REG#20949213
BD: 2/3/24

Purebred
Angus

KOUPALS B&B Pathfinder 8106
J & J Pathfinder 710
J&J Miss Blackcap 710
J&J Weigh Up 294
JK Blackcap Bessie 798
J K Blackcap Bessie 180

BW	Adj WW	Adj YW
81	789	1389
Scrotal		
36.7		

Recommended for larger framed heifers or cows.

The only son of Pathfinder 710 son in the sale, he may be a little younger than the rest but man he is a mountain of a man.



131

132 JK True Grit 474

CED	BW	WW	YW	MM
+13	-0.9	+56	+110	+21
7%	20%	64%	18%	88%

REG#21073698
BD: 1/10/224

Purebred
Angus

Freys Cowboy Logic
FREYS True Grit
FAR Fair Lady 8094
S A Arsenal 155
JK Black Flame 236
JK Black Flame 950

BW	Adj WW	Adj YW
80	730	1333
Scrotal		
39.96		

Heifer Bull. Bigger profiled True Grit son that does a lot of things right out of first calf heifer.



132

133 JK Scale House 4101

CED	BW	WW	YW	MM
+5	+1.2	+70	+132	+15
57%	35%	33%	13%	99%

REG#21163604
BD: 1/29/224

Purebred
Angus

Marcys Scale Crusher
S A V Scale House 0845
S A V Blackcap May 1416
S A V Circuit Breaker 7136
T K Linda G896
T K Linda Y642

BW	Adj WW	Adj YW
90	704	1336
Scrotal		
36.07		

The lone SAV scale house bull in the sale. Stout, moderate framed from a beautiful Circuit Breaker daughter.



133

134 458

BD: 1/7/23

Commercial
Angus

Connealy Big Valley
K Big Valley 165J
K Lady Count 717
Varilek Element 7112 03

BW	Act WW	Act YW
95	918	1518
Scrotal		
38		

This bull is out of a recip cow that we couldn't ever get the parentage figured out on and thought she had a embryo calf, turns out it is out of the clean up bull. We thought he was way too good of a calf to let go to waste. He is a high growth big framed stout bull that would make anyone an awesome set of calves.

Special Open Heifer Pick Lot



BEAUTIFUL DAUGHTERS OF ES ALL BEEF F113



LBRS Genesis G69
Sire of Lots 135-135C

- The day this group of calves came off the trailer from our cooperator herd at Glen Kummer's I knew they were kinda special. These four heifers and their three full brothers in the bull division put a smile on our face as we processed them through the chute. They were just as consistent and represented the type of cattle we like to raise. When we got in the house that night I told Cathy we need to sell pick of those four F113 X Genesis heifers in our next production sale...and by golly, here they are!
- We can't say enough about the maternal side of the pedigree, their granddam was a very low maintenance cow that came from Cow Camp. She put on weight just looking at grass and had a perfect udder. These heifer's dam, ES/All Beef F113, was the 1st natural calf out of the Cow Camp cow, 6096D, and is just like her mother. Four out of her first 5 years of raising a calf here at ES, she received a 9+ for an udder score
- The real success story was when Jared Seinola of Five Star Ranch selected a full sister to these four heifers, ES J39 for \$23,000 in our 2023 production sale. She had a LCDR Progressive bull calf along side which they sold for \$35,000 in their bull sale the next spring and may have another awesome group of bulls out of her in this year's sale. Nothing is more rewarding for a producer than when your stock does well for others
- We ran the heifers through the Right Choice program with all four coming back as a G+ with M146, M147, M148 also having the ATM logo. We feel the upside potential on this group of heifers is unlimited and can't wait to see which one is selected.
- Working with this group through the clipping and picturing process has been a treat as well, they all have a pleasant disposition as do their full brothers in the bull pen
- **Reserving the right to one flush with a minimum of six quality embryos on the heifer selected.**



135



135A



135B



135C

Selling choice of
the open heifer mates
to ES/All Beef F113 X
LBRS Genesis G69!

Full sisters to our high selling
bred heifer in our
2023 sale going to
5 Star Ranch!

Pedigree of Lots 135-135C:

LBRS Genesis G69 WS Proclamation E202
LBR Diana D69
ES/All Beef F113 ES DZ3
CCR Ms 0056 Cwboy 6096D



ES J39
\$23,000
Full Sister

135 ES M146



REG#4414103 • BD: 2/5/24

Homo Black Homo Polled
3/4 SM 1/4 AN

Adj BW	Adj WW
59 ET	601

CE	BW	WW	YW	ADG	MCE	Milk	MWW	Stay	DOC	CW	YG	Marb	BF	REA	API	TI
13	-2.4	86	139	0.33	6	26	69	15	14.7	40.0	-0.05	0.79	-0.008	0.51	165	100
	15	20	20	20		35	25		25	35		10			10	4

135A ES M147



REG#4414136 • BD: 2/9/24

Homo Black Homo Polled
3/4 SM 1/4 AN

Adj BW	Adj WW
75 ET	598

CE	BW	WW	YW	ADG	MCE	Milk	MWW	Stay	DOC	CW	YG	Marb	BF	REA	API	TI
12	0.9	86	142	0.35	5	26	69	16	14.7	49.2	-0.10	0.57	-0.019	0.69	148	91
		20	15	10		35	25		25	15		25			30	20

135B ES M148



REG#4414098 • BD: 2/3/24

Homo Black Homo Polled
3/4 SM 1/4 AN

Adj BW	Adj WW
69 ET	665

CE	BW	WW	YW	ADG	MCE	Milk	MWW	Stay	DOC	CW	YG	Marb	BF	REA	API	TI
13	-0.4	86	136	0.31	6	26	69	14	12.8	47.5	-0.12	0.72	-0.032	0.63	156	96
		20	20	30		35	25			20		15			20	10

135C ES M149



REG#4414101 • BD: 2/4/24

Homo Black Homo Polled
3/4 SM 1/4 AN

Adj BW	Adj WW
79 ET	608

CE	BW	WW	YW	ADG	MCE	Milk	MWW	Stay	DOC	CW	YG	Marb	BF	REA	API	TI
14	0.2	84	135	0.32	7	26	68	16	12.2	31.0	-0.09	0.67	-0.014	0.44	157	93
		30	25	25		35	25					15			20	15

136 ES L150REG#4258037 • BD: 2/11/23 • **Homo Black Homo Polled 3/4 SM 1/4 AN**

Adj BW	Adj WW
81 ET	647

CE	BW	WW	YW	ADG	MCE	Milk	MWW	Stay	DOC	CW	YG	Marb	BF	REA	API	TI
11	2.1	87	135	0.31	7	27	70	21	13.2	32.8	-0.36	0.57	-0.073	0.87	157	91
		20	25	30		30	20	3			10	25	10	20	20	25

CLRS Homeland 327H

ES H129

Redhill 672X X004 231A

CLRS Always Xcellent

WS Proclamation E202

ES A110

LOT 136A: HEIFER CALF AT SIDE

Sire: Bridle Bit Recharge K256 • BD: 2/6/25 • BW: 75 • Tattoo: N6

Est PM EPDs: 14 -.3 85 136 .32 9 29 72 19 14.4

Carcass: 41.7 -.38 .49 -.07 1.05 166 94



ES LH129-3, Full Brothers



ES LH129-1, Full Brothers



ES LH129-2, Full Brothers

- We swung the barn door wide open to let these two go. They are the only two Homeland daughters out of the same flush that produced three stud herd sires that sold in last year's sale. ES Tornado LH129-3 went to Barry Olson for \$18,000, we thought enough of him to collect semen and use back in herd, the other two went to Jerry Hink and Pete Bakken. I would have to say, whether we are talking bulls or females, the guess work is done with this mating. The H129 cow is making quite a case to take over the throne that has been occupied by her mother A110 for so many years. If you still have any doubts, slip back to the bull division and check out the flush of these two heifer's mother, ES H129, has out of LCDR Diligence, Lots 1-6 are sure to have lots of friends March 7
- The baldy, L149, is the flashy one that is mid-sized with great hip. Her feet are as good as any cow we have. Her calf will be one of the first out of our new herd sire KBHR Kota
- Some might wonder if there's almost too much heifer here, she's a tank. I interpret her look as the type that can raise herd bulls, she's my kind. ES L150's calf could very well be worth the trip to Salem alone. Sired by Bridle Bit Recharge, the high selling bull at Chad Cook's a couple years ago at over \$100,000 to CK Cattle from Highmore. The first Recharge heifer just sold under the bright lights of the NWSS for \$67,000. The Recharge bulls also highlighted the recent CK Cattle production sale.
- The genomic profile of these two heifers is very versatile with many traits in the top 25% of the breed

**137 ES L149**REG#4258032
BD: 2/13/23**Homo Black Baldy
Homo Polled
3/4 SM 1/4 AN**

Adj BW	Adj WW
55 ET	529

CE	BW	WW	YW	ADG	MCE	Milk	MWW	Stay	DOC	CW	YG	Marb	BF	REA	API	TI
14	-1.4	82	132	0.31	9	27	68	22	13.6	21.1	-0.26	0.51	-0.046	0.60	164	91
		30	35	30	30	25	30	30	2	35	35	35	35		10	20

CLRS Homeland 327H

ES H129

Redhill 672X X004 231A

CLRS Always Xcellent

WS Proclamation E202

ES A110

LOT 137A: BULL CALF AT SIDE

Sire: KBHR Kota L175 • BD: 2/12/25 • BW: 69 • Tattoo: NL149

Est PM EPDs: 13 -.6 86 138 .32 8 25 68 21 14.9

Carcass: 36.2 -.22 .73 -.04 .74 183 100

138 ES L109

CE	BW	WW	YW	ADG	MCE	Milk	MWW	Stay	DOC	CW	YG	Marb	BF	REA	API	TI
13	-1.1	76	119	0.27	7	23	61	20	10.1	27.1	-0.33	0.31	-0.055	0.83	144	81
	35							10			15		25	25		

REG#4257961
BD: 3/18/23

Homo Black
Homo Polled
5/8 SM 3/8 AN

Adj BW	Adj WW
80	586

CLRS Homeland 327H

ES E72

Redhill 672X X004 231A
CLRS Always Xcellent
W/C United 956Y
ES B5

AI Sire: KBHR Kota L175 on 5/9/24 • Due 2/14/25

Est PM EPDs: 13 -4 83 131 .30 7 23 64 19 13.1

Carcass: 39.4 -.27 .64 -.04 .88 171 95

Pasture Sire: CLRS Jericho 336J from 6/20 to 7/30/24

- We thought we were done taking pictures of heifers til Cathy said we forgot one. I'm glad we went back to look because what a find she is
- She has a real nice running gear under her as she cruised around the picture pen
- She comes with a KBHR Kota baby alongside, Kota was one of the three Genesis brothers that led off the Keller Broken Heart sale last spring



138

139 ES L97

CE	BW	WW	YW	ADG	MCE	Milk	MWW	Stay	DOC	CW	YG	Marb	BF	REA	API	TI
16	-1.4	80	124	0.28	9	28	67	24	10.1	28.5	-0.40	0.42	-0.059	1.04	163	88
	20	30			20	28	30	1			5		25	5	15	30

REG#4257856
BD: 3/16/23

Homo Black
Homo Polled
5/8 SM 3/8 AN

Adj BW	Adj WW
67	595

CLRS Homeland 327H

ES E34

Redhill 672X X004 231A
CLRS Always Xcellent
TJ Main Event 503B
ASR Ms Super Baldy X0100

LOT 139A: HEIFER CALF AT SIDE

Sire: KBHR Kota L175 • BD: 2/8/25 • BW: 68 • Tattoo: N8

Est PM EPDs: 14 -.6 85 134 .31 8 25 68 21 13.1

Carcass: 39.2 -.30 .69 -.04 .96 179 98

- Sometimes you don't realize how good an animal is until you go through the records. She's a full sister to last year's high selling bred going to 5N Farms in Nebraska for \$20,000
- A couple of years prior her dam, E34, had one of the lead bulls we used in our ads
- You know how they say he out punted his coverage when a so/so guy gets a really great gal for a wife, well that's the case here, as E34 is just a hard-working cow that raises the right type



139

ES K38, Full sister

**140 ES L84**

REG#4257977 • BD: 3/14/23 • **Homo Black Baldy Homo Polled Purebred SM**

CE	BW	WW	YW	ADG	MCE	Milk	MWW	Stay	DOC	CW	YG	Marb	BF	REA	API	TI
12	2.4	94	147	0.33	7	22	69	14	9.1	42.7	-0.23	0.30	-0.073	0.59	142	91
		10	10	10			25			15		30				20

Adj BW	Adj WW
87 ET	666

KOCH Big Timber 685D
Bridle Bit GPS H078
Bridle Bit Miss F840
Remington Lock N Load 54U

ES A110

ESU56

- She'll be an easy one to find in Salem on March 7 with her flashy chrome face
- Her sire, GPS, is a bull we selected from Bridle Bit in Colorado several years ago to run cleanup in our heifer pen. The 1st thing I noticed when he came off the trailer was how good his feet were
- Her mating to TERS Leopold will guarantee a nice set of EPD's to start with



ES A110, Dam



140

AI Sire: TERS Leopold 316L on 5/8/24 • Due 2/13/25

Est PM EPDs: 15 .0 91 146 .35 9 22 68 17 14.7

Carcass: 53.2 -.22 .66 -.04 .90 169 99

Pasture Sire: CLRS Jericho 336J from 6/20 to 7/30/24



141 ES L96

CE	BW	WW	YW	ADG	MCE	Milk	MWW	Stay	DOC	CW	YG	Marb	BF	REA	API	TI
11	2.2	73	110	0.23	5	21	58	15	14.3	36.6	-0.38	0.12	-0.068	1.01	125	74
									20	25				20		

REG#4257948
BD: 3/16/23

**Homo Black Baldy
Homo Polled
Purebred SM**

Adj BW	Adj WW
87 ET	591

RFS Homeland H18

ES A110

**LCDR Impact 134F
E42**

**Remington Lock N Load 54U
ESU56**

AI Sire: Hook's Galileo 210G on 5/10/24 • Due 2/15/25

Est PM EPDs: 14 -1.82 125 27 9 30 70 17 16.9

Carcass: 43.5 -.28 .67 -.05 .87 169 96

Pasture Sire: CLRS Jericho 336J from 6/20 to 7/30/24

- I think we are all suckers for a good-looking baldy female and this one certainly fits the bill
- She's a mid-sized heifer with a lot of length yet bold in her middle 1/3
- Bred to the big numbered bull, Galileo, whose offspring have been popping up in many sales around the country and commanding top \$'s



ES A110, Dam

142 ES L135

REG#4258013 • BD: 4/25/23 • **Homo Black Homo Polled Purebred SM**

CE	BW	WW	YW	ADG	MCE	Milk	MWW	Stay	DOC	CW	YG	Marb	BF	REA	API	TI
15	1.6	101	164	0.39	7	28	79	13	13.8	57.5	-0.19	0.62	-0.050	0.83	167	106
15		3	1	2	25	15	3		25	2		5			10	2

LOT 142A: BULL CALF AT SIDE

Sire: ES Solid Gold JG157 • BD: 2/9/25 • BW: 99 • Tattoo: NL135

Est PM EPDs: 12 1.6 108 168 .37 6 26 80 14 12.7

Carcass: 54.1 -.14 .70 -.03 .80 170 110

Adj BW	Adj WW
77	634

**CDI Innovator 325D
LCDR Progressive 106G
WS Miss Sugar C4
Remington Lock N Load 54U
ES A110
ESU56**

- We have offered a lot of progeny out of the A110 cow, but few have been her own natural calf like L135, as she has been in the donor pen most of her life
- The A110 cow has a long list of progeny but just look at the few full sibs that found the way to some prominent programs around the country: TNT in ND, Craig Wilken, IA, Cory Eich, SD, Wm Donald, MO, Matt Hadwiger, NE, Joe Delheimer, IL
- Can't wait for her calf, if you ever visit with the Harts, Justin and Mara, ask them what they think of their ES Solid Gold's



ES J136, Full Sister



ES J135, Full Sister



ES JA110-4, Full Brother



ES JA110-5, Full Brother



ES JA110-8, Full Brother



ES JA110-7, Full Brother

143 ES L51

CE	BW	WW	YW	ADG	MCE	Milk	MWW	Stay	DOC	CW	YG	Marb	BF	REA	API	TI
14	0.4	85	135	0.31	6	29	71	15	14.5	42.9	-0.33	0.30	-0.058	1.01	148	90
20	35	30	20	15		15	15		20	15		30		20	30	25

REG#4257913
BD: 3/8/23

Homo Black
Homo Polled
Purebred SM

Adj BW	Adj WW
79	594

LCDR Progressive 106G **CDI Innovator 325D**

ES G168

WS Miss Sugar C4

ES EX75-1

ES W46

LOT 143A: HEIFER CALF AT SIDE

Sire: ES Solid Gold JG157 • BD: 2/7/25 • BW: 70 • Tattoo: N7

Est PM EPDs: 11 1.0 100 152 .33 5 26 76 15 13.0

Carcass: 46.6 -.21 .55 -.03 .88 161 102

- A female that has a nice look through her shoulder neck and head
- Reads really well from an EPD standpoint along with her own individual performance ratioing above 100
- With the cattle prices the way they are, these ES Solid Gold calves could be worth their weight in gold



ES JG168, Maternal Brother

144 ES L74

REG#4257925 • BD: 3/12/23 • **Homo Black Homo Polled Purebred SM**

CE	BW	WW	YW	ADG	MCE	Milk	MWW	Stay	DOC	CW	YG	Marb	BF	REA	API	TI
10	2.6	99	146	0.29	2	23	73	14	13.4	31.7	-0.49	0.10	-0.091	1.11	131	90
		4	10	25			10		30		15		20	10		25

Adj BW	Adj WW
85	643

Rubys Turnpike 771E
KRJ Dakota Outlaw G974
BRKC Daphne DY37
ES EX75-1

ES G53

ES D130

- Here is the real performance heifer out of Dakota Outlaw, ratioing 108 & 109 for WW & YW and WW & YW EPD's in the top 4 & 10% of the breed. Adam makes sure every visitor who looks at the bred finds L74, she's his favorite.
- No matter which angle you evaluate her from, she has the goods
- Check out her TJ Gold maternal sister that sold to Deryl Riley in Nebraska two years ago



ES J11, Maternal Sister

**145 ES L49**

CE	BW	WW	YW	ADG	MCE	Milk	MWW	Stay	DOC	CW	YG	Marb	BF	REA	API	TI
16	-0.9	90	134	0.28	7	23	67	16	11.2	31.7	-0.36	0.09	-0.074	0.84	131	84
20	35	15	25				30				10		10	25		

REG#4257859
BD: 3/7/23

Homo Black
Homo Polled
3/4 SM 1/4 AN

Adj BW	Adj WW
71	636

KRJ Dakota Outlaw G974 **Rubys Turnpike 771E**

ES E25

BRKC Daphne DY37

W/C United 956Y

ES B99

LOT 145A: BULL CALF AT SIDE

Sire: KBHR Global J138 • BD: 1/31/25 • BW: 75 • Tattoo: NL49

Est PM EPDs: 17 -1.4 84 131 .29 9 23 66 19 14.7

Carcass: 31.4 -.33 .37 -.06 .83 164 92

- She's a mid-sized heifer with a ton of rib shape
- The Dakota Outlaw sire group was a favorite in last year's bull sale with several high sellers and the commercial guys love the bulls
- As an individual she hit the scales pretty hard ratioing 107 for WW and 105 for YW



146 ES L89REG#4257876 • BD: 3/15/23 • **Hetero Black Homo Polled Purebred SM**

CE	BW	WW	YW	ADG	MCE	Milk	MWW	Stay	DOC	CW	YG	Marb	BF	REA	API	TI
4	5.9	106	161	0.35	1	23	75	12	18.1	49.4	-0.19	0.35	-0.039	0.80	127	93
		1	2	5			10		2	10		25				15



Adj BW	Adj WW
110	743

CCR Cowboy Cut 5048Z
TJ Platte River 370D
TJ 43Z
LCDR Witness 541C
ES H58
ES C18

- Can't say we don't offer some of the best we have, this gal is a beast
- Whether it's muscle, bone or capacity this female just offers more of everything
- She was the #1 WW & #3 YW out of 90 calves in her contemporary group and her dam has always scored a 9 on udder quality to top it off



ES KH58, Maternal Brother

147 ES L101

CE	BW	WW	YW	ADG	MCE	Milk	MWW	Stay	DOC	CW	YG	Marb	BF	REA	API	TI
12	4.7	86	138	0.33	6	27	70	16	15.0	37.0	-0.26	0.41	-0.047	0.80	146	87
		25	15	10		25	20		15	25		20			30	30

REG#4257983
BD: 3/16/23**Homo Black**
Homo Polled
Purebred SM

Adj BW	Adj WW
115 ET	662

TJ Platte River 370D**ES A110****CCR Cowboy Cut 5048Z****TJ 43Z****Remington Lock N Load 54U**
ESU56**AI Sire: GW Medicine Man 200K** on 5/9/24 • Due 2/14/25

Est PM EPDs: 14 .6 86 139 .34 7 27 70 16 15.1

Carcass: 47.0 -.26 .63 -.05 .88 162 95

Pasture Sire: CLRS Jericho 336J from 6/20 to 7/30/24

- Great choice for those looking for a little more frame in their cattle
- Out of our A110 donor who needs no introduction here as her progeny has led at both the bull and heifer divisions in our production sales for several years
- Hope her GW Medicine Man calf is as good as a few we had in the pastures last summer



ES A110, Dam

**148 ES L47**

CE	BW	WW	YW	ADG	MCE	Milk	MWW	Stay	DOC	CW	YG	Marb	BF	REA	API	TI
13	0.0	80	118	0.24	7	25	65	17	16.6	27.7	-0.18	0.68	-0.031	0.57	167	95
	30	30			35	35			10			4			10	15

REG#4257950
BD: 3/7/23**Homo Black**
Homo Polled
Purebred SM

Adj BW	Adj WW
83	598

TJ Platte River 370D**ES H39****CCR Cowboy Cut 5048Z****TJ 43Z****TJ Heisman 388F**
ES F86**AI Sire: BSUM Summit 303L** on 5/10/24 • Due 2/15/25

Est PM EPDs: 15 -.6 85 133 .30 8 25 68 17 17.5

Carcass: 35.5 -.12 .80 -.02 .56 176 100

Pasture Sire: CLRS Jericho 336J from 6/20 to 7/30/24

- Great opportunity to get in on the ground floor with one of the new exciting bulls to sell last spring with her BSUM Summit baby
- For those looking for a little more frame, she's above average in our herd
- Dam has a WW ratio of 102 on three calves



149 ES L123REG#4257982 • BD: 4/1/23 • **Homo Black Baldy Homo Polled 3/4 SM 1/4 AN**

CE	BW	WW	YW	ADG	MCE	Milk	MWW	Stay	DOC	CW	YG	Marb	BF	REA	API	TI
7	3.9	94	138	0.28	6	26	75	18	17.4	53.7	-0.25	0.26	-0.023	1.17	126	83
		10	20			30	10	15	5	10	35			2		

Adj BW	Adj WW
93	676

G A R Original Sin
IR Original H341
IR Ms Vienna E758
SFI Enough Said D3
ES G73
ES Y9

- I'm sure she'll have some friends on March 7 with her neat blaze face and feminine front end
- A little more frame and length of body on this IR Original daughter that offers some fresh genetics in a nice maternal package
- She was on the heavy end of the scales each time we weighed ratioing 114 for WW and 106 for YW



ES K59, Maternal Sister



149

150 ES L110

CE	BW	WW	YW	ADG	MCE	Milk	MWW	Stay	DOC	CW	YG	Marb	BF	REA	API	TI
9	0.0	82	122	0.25	6	23	65	15	18.4	46.8	-0.31	0.37	-0.013	1.35	130	84
		35					35		3	20	20			1		

REG#4257835
BD: 3/18/23**Homo Black**
Homo Polled
3/4 SM 1/4 AN

Adj BW	Adj WW
78	636

IR Original H341
ES A71

G A R Original Sin
IR Ms Vienna E758
TNT Axis X307
ES XM15

LOT 150A: HEIFER CALF AT SIDE

Sire: BSUM Summit 303L • BD: 2/12/25 • BW: 92 • Tattoo: N15
 Est PM EPDs: 13 -.7 87 135 .31 8 24 68 16 18.4
 Carcass: 44.6 -.19 .64 -.01 .96 161 95

- Her dam, A71, has been notorious for stamping bulls that ring the bell in our annual production sale. She had seven bulls in a row until this gal came along
- She's got a great profile, like her maternal brothers but also has some punch with a WW ratio of 107
- If you're like us, you are always looking for new fresh genetics and we feel her Summit baby offers a new twist to the Simmy genetic pool



150

ES JA71,
Maternal
BrotherES KA71,
Maternal
Brother**151 ES L137**

CE	BW	WW	YW	ADG	MCE	Milk	MWW	Stay	DOC	CW	YG	Marb	BF	REA	API	TI
8	2.9	92	143	0.32	4	21	68	12	17.9	44.8	-0.29	0.41	-0.042	1.04	127	87
		10	15	25			25		4	25	25			5		35

REG#4257837
BD: 4/28/23**Homo Black**
Homo Polled
5/8 SM 3/8 AN

Adj BW	Adj WW
86	594

IR Original H341
ES Z30

G A R Original Sin
IR Ms Vienna E758
Remington Lock N Load 54U
ES W43

LOT 151A: BULL CALF AT SIDE

Sire: JC Quiet Man 758K • BD: 2/10/25 • BW: 70 • Tattoo: NL137
 Est PM EPDs: 12 .2 87 130 .27 6 23 67 18 14.6
 Carcass: 39.3 -.22 .50 -.03 .82 158 92

- Her dam has been withstanding the test of time bringing home 11 calves with #12 scheduled to hit the ground this spring
- She's a mid-sized heifer with a lot of middle
- Take a look at the JC Quietman bulls in the bull pens, the real value may be in her 1st calf



151

152 ES L44REG#4257928 • BD: 3/6/23 • **Homo Black Homo Polled 3/4 SM 1/4 AN**

CE	BW	WW	YW	ADG	MCE	Milk	MWW	Stay	DOC	CW	YG	Marb	BF	REA	API	TI
15	-1.6	87	150	0.40	9	29	72	12	14.1	36.9	-0.08	0.24	0.002	0.63	134	87
25	25	20	10	3	20	15	15		30							35



Adj BW	Adj WW
82	603

TJ Frosty 318E
TJ Stone Cold 336G
TJ 11D
TJ High Plains 986E
ES G4
ES E124

- This is one of those heifers that is hard to part with. Great Granddam is one of our favorites, W46
- She's big and bold with a ton of rib shape and boasts a 113 YW ratio
- She has one of the first KBHR Kota calves to ever hit the ground. Hope they are as exciting as we think they will be

153 ES L78

CE	BW	WW	YW	ADG	MCE	Milk	MWW	Stay	DOC	CW	YG	Marb	BF	REA	API	TI
12	1.2	90	144	0.34	7	31	76	16	17.9	40.2	-0.24	0.42	-0.046	0.79	141	90
		15	15	15		5	4		4	35				30		25

REG#4257966
BD: 3/13/23**Hetero Black**
Homo Polled
3/4 SM 1/4 AN

Adj BW	Adj WW
89	626

TJ Stone Cold 336G**ES H81****TJ Frosty 318E****TJ 11D****W/C Fort Knox 609F****ES X85****LOT 153A: BULL CALF AT SIDE**

Sire: KBHR Global J138 • BD: 2/4/25 • BW: 71 • Tattoo: NL78

Est PM EPDs: 15 -.4 85 135 .32 9 28 70 18 17.9

Carcass: 35.1 -.26 .54 -.05 .79 169 95

- One of the larger framed heifers in the offering
- Keep your replacements out of consistent cow families, L78 has WW & YW ratios of 105 & 108. Her dam, H81, has weaned three calves with an average WW ratio of 106. The longevity comes from the granddam who has weaned twelve calves here at ES
- Bred to KBHR Global who's calves were some of the most talked about calves in the pairs pen last

154 ES L53

CE	BW	WW	YW	ADG	MCE	Milk	MWW	Stay	DOC	CW	YG	Marb	BF	REA	API	TI
13	0.3	75	119	0.27	6	17	55	13	14.8	23.6	-0.30	0.38	-0.035	0.84	131	80
									25		25			25		

REG#4257909
BD: 3/9/23**Homo Black**
Homo Polled
3/4 SM 1/4 AN

Adj BW	Adj WW
76	531

LCDR Reserve 210J**ES G31****HHS Mr Entourage 867B****LCDR Ms Echo 43E****TJ Franchise 451D****ES Z30****LOT 154A: BULL CALF AT SIDE**

Sire: KBHR Global J138 • BD: 2/2/25 • BW: 82 • Tattoo: NL53

Est PM EPDs: 15 -.8 77 123 .29 9 21 59 17 16.4

Carcass: 27.4 -.29 .51 -.04 .82 163 90

- It's a little early as I write this but judging by her little udder coming, she has the making of a beautiful little momma cow
- This is the 3rd female in a row out of her dam, G31, the first two also sold as breds in prior sales
- There will only be a couple of chances to buy a heifer with a Global baby alongside. They were surely popular last year

ES K30,
Maternal Sister

ES J7, Maternal Sister

155 ES L91

CE	BW	WW	YW	ADG	MCE	Milk	MWW	Stay	DOC	CW	YG	Marb	BF	REA	API	TI
8	4.3	98	148	0.31	4	18	67	16	14.9	44.0	-0.28	0.50	-0.056	0.89	138	91
		3	10	30			30		20	25	30	35	25	15		20

REG#4257998
BD: 3/15/23

Homo Black
Homo Polled
3/4 SM 1/4 AN

Adj BW	Adj WW
97	626

LCDR Reserve 210J

Miss Werning 315A

LOT 155A: HEIFER CALF AT SIDE

Sire: CLRS Hero 8086H • BD: 2/6/25 • BW: 89 • Tattoo: N5
Est PM EPDs: 13 .4 82 125 .28 6 17 58 20 7.3
Carcass: 25.7 -.31 .48 -.05 .81 160 89

HHS Mr Entourage 867B

LCDR Ms Echo 43E

R&R Chamberlain X744

Miss Werning 9715T

- She is the product of a female we purchased out of the WC program several years ago
- We selected her mother for her overall mass and capacity they type that could raise herd bulls, and the RR Chamberlain cow family certainly accomplished that
- Her CLRS Hero calf will only be 1 of 2 in the offering but they have sure been a favorite sire group for the last couple of years for those that sort through the sale heifers



155

156 ES L94

REG#4257872 • BD: 3/15/23 • **Homo Black Homo Polled 5/8 SM 3/8 AN**

CE	BW	WW	YW	ADG	MCE	Milk	MWW	Stay	DOC	CW	YG	Marb	BF	REA	API	TI
14	-2.2	64	94	0.19	6	26	57	21	11.0	23.9	-0.17	0.54	-0.028	0.51	155	80
		35	20			35		4				30			20	

Adj BW	Adj WW
70	560

EGL Firesteel 103F
CLRS Jericho 336J
CLRS All Xcellence 316 A
ES Epic EB94
ES H79
ES W74

- When we sorted for sale heifers last November one of our favorite sire groups was the CLRS Jericho's
- The maternal side of this pedigree is rock solid with good udders and a granddam that had a WW ratio of 111 on 11 calves
- A beautiful maternal sister sold to Adam Strutzman in Nebraska in last year's sale



ES K14, Maternal Sister



156

AI Sire: LRS Rarity 983J on 5/9/24 • Due 2/14/25
Est PM EPDs: 13 -.9 80 126 .29 5 25 66 19 14.4
Carcass: 48.3 -.19 .49 -.03 .85 154 87
Pasture Sire: CLRS Jericho 336J from 6/20 to 7/30/24

157 ES L59

CE	BW	WW	YW	ADG	MCE	Milk	MWW	Stay	DOC	CW	YG	Marb	BF	REA	API	TI
14	0.4	85	127	0.26	6	28	71	19	14.2	46.9	-0.25	0.35	-0.042	0.94	143	86
		25	35			20	15	15		30	20	35		15		

REG#4257989
BD: 3/9/23

Homo Black
Polled
5/8 SM 3/8 AN

Adj BW	Adj WW
82	578

CLRS Jericho 336J

ES G82

LOT 157A: HEIFER CALF AT SIDE

Sire: CCR Bedrock 5171J • BD: 2/9/25 • BW: 62 • Tattoo: N9
Est PM EPDs: 15 -.7 84 134 .31 7 28 72 17 14.2
Carcass: 50.8 -.14 .62 -.02 .80 160 93

EGL Firesteel 103F

CLRS All Xcellence 316 A

JK High Point 745

ES W56

- When I was out in the pasture analyzing the heifers for footnotes this gal got me excited
- Structurally very sound with a wide top, good hip and lots of rib shape
- Maternal sister sold to Dan Lukach in Illinois two years ago
- Dam has a WW ratio of 108 on four calves



157

158 ES L71REG#4257984 • BD: 3/12/23 • **Hetero Black Homo Polled 3/4 SM 3/16 AR 1/16 AN**

CE	BW	WW	YW	ADG	MCE	Milk	MWW	Stay	DOC	CW	YG	Marb	BF	REA	API	TI
8	3.1	85	129	0.28	3	24	66	16	11.0	28.1	-0.36	0.12	-0.045	1.00	114	76
		25	30				35				10			10		



AI Sire: JC Quiet Man 758K on 5/8/24 • Due 2/13/25
 Est PM EPDs: 12 .3 84 124 .25 6 24 66 20 11.2
 Carcass: 30.8 -.25 .35 -.03 .82 154 88
 Pasture Sire: CLRS Jericho 336J from 6/20 to 7/30/24

Adj BW	Adj WW
97	620

Hook's Eagle 6E
Bridle Bit Efficient J160
Bridle Bit Miss Z202
CDI Authority 77X
ES E129
ES A226

- L71 traces back to one of our really great cow families, both the granddam and great granddam were in the donor pen multiple times
- We bought a semen interest in her sire, Bridle Bit Efficient, along with TNT Simmentals in ND. He was our selection out of the Bridle Bit Sale for feed efficiency
- She's not just another pretty face as she has Ww & YW ratios of 104 & 107



ES JE129, Maternal Brother

159 ES L121REG#4257933 • BD: 3/28/23 • **Homo Black Hetero Polled 3/4 SM 1/4 AN**

CE	BW	WW	YW	ADG	MCE	Milk	MWW	Stay	DOC	CW	YG	Marb	BF	REA	API	TI
13	1.3	93	155	0.39	10	31	77	16	14.4	53.8	-0.12	0.19	0.028	1.15	133	86
		10	5	3	15	10	4		25	10				2		35

**LOT 159A: BULL CALF AT SIDE**

Sire: IR/JLN Boomer J425 • BD: 2/11/25 • BW: 78 • Tattoo: NL121
 Est PM EPDs: 15 -.7 88 145 .36 9 27 71 17 14.7
 Carcass: 41.8 -.25 .41 .01 1.23 160 94

Adj BW	Adj WW
82	621

Gibbs 7382E Broad Range
Gibbs 9114G Essential
Gibbs 7153E Star 3136A
TJ Power Grid 363Y
ES G45
ES X52

- This would be the first Gibbs Essential heifer we have ever offered for sale and she's a good one
- Essential is a genetic giant ranking in the top 10% of the breed in 13 different EPD categories
- Offers some pretty stout performance #'s with a 104 ratio for WW then moving towards the top of the pack to ratio 111 for YW
- We'll see what she has but if it's a heifer calf the maternal side is top shelf but if it is a bull, keep every replacement back



ES JG45, Maternal Brother

160 ES L67REG#4257889 • BD: 3/11/23 • **Homo Black Homo Polled 5/8 SM 3/8 AN**

CE	BW	WW	YW	ADG	MCE	Milk	MWW	Stay	DOC	CW	YG	Marb	BF	REA	API	TI
3	6.1	107	163	0.35	1	24	78	15	12.8	66.3	-0.14	0.26	-0.041	0.85	116	87
		1	2	10			3			2				20		35

Adj BW	Adj WW
101	703

TJ Frosty 318E
TJ Black Ice 451H
TJ 95A
W/C United 956Y
ES B19
ES Z111

- If you're looking for one of the performance females in the offering study your lesson here
- Ratioed 118 for WW and 113 for YW – WOW. Also, in the top 1% & 2% of the breed for WW, YW, MWW and CW EPDs
- Dam has had nine calves with a WW ratio of 113 and has always had an udder score that ranked in the upper end of the herd



160

161 ES L83

CE	BW	WW	YW	ADG	MCE	Milk	MWW	Stay	DOC	CW	YG	Marb	BF	REA	API	TI
12	0.9	72	114	0.26	5	25	61	17	15.1	14.4	-0.40	0.28	-0.059	0.84	129	76
								35	20		5		25	25		

REG#4257853
BD: 3/14/23**Homo Black**
Homo Polled
3/4 SM 1/4 AN

Adj BW	Adj WW
83	601

W/C Fort Knox 609F
ES D18

W/C Bankroll 811D
K-LER Dolly's Queen 609D
W/C United 956Y
ES B2

LOT 161A: BULL CALF AT SIDE

Sire: ES Solid Gold JG157 • BD: 2/9/25 • BW: 84 • Tattoo: NL83
 Est PM EPDs: 10 1.2 93 142 .30 5 25 71 16 13.4
 Carcass: 32.2 -.24 .53 -.03 .81 157 97

- Mid-size package that packs some punch
- Looks like a typical Fort Knox in her front 1/3 with a little extra neck extension
- Last year we made the trip to Frederick, SD to see the ES Solid Gold calves at the Hart's bull sale, they did not disappoint. He is one of the highest performing and most sought after sire groups in the offering



161



ES J95, Maternal Sister

162 ES L82

CE	BW	WW	YW	ADG	MCE	Milk	MWW	Stay	DOC	CW	YG	Marb	BF	REA	API	TI
8	4.2	102	157	0.35	3	22	73	14	18.0	35.8	-0.38	0.25	-0.078	0.93	136	93
		2	3	5			15		2	30				35		15

REG#4258000
BD: 3/13/23**Homo Black**
Homo Polled
Purebred SM

Adj BW	Adj WW
98	580

LCDR Favor 149F
ES X85

LCDR Witness 541C
WS Miss Sugar C4
Mr NLC Upgrade U8676
ESP87

LOT 162A: HEIFER CALF AT SIDE

Sire: GW Medicine Man 200K • BD: 2/3/25 • BW: 63 • Tattoo: N3
 Est PM EPDs: 12 .2 94 148 .35 6 25 71 15 16.7
 Carcass: 45.9 -.33 .55 -.07 .95 160 99

- Profitability can come in several ways, longevity in a cow family is definitely one of them. Her dam has weaned twelve calves here at ES
- There have been many maternal brothers that have sold in past sales and always helped the sale average
- Her Medicine Man calf was the #1 choice on Mahdi's RightMate program



162



ES J85, Maternal Sister

ES KX85, Maternal Brother

163 ES L108REG#4257839 • BD: 3/18/23 • **Hetero Black Homo Polled 3/4 SM 5/32 AR 1/16 AN 1/32 CS**

CE	BW	WW	YW	ADG	MCE	Milk	MWW	Stay	DOC	CW	YG	Marb	BF	REA	API	TI
10	3.0	93	140	0.30	5	31	78	15	12.7	40.7	-0.38	0.36	-0.051	1.20	132	88
		10	15	35		5	3			35	10		25	2		30

AI Sire: CLRS Hero 8086H on 5/8/24 • Due 2/13/25
 Est PM EPDs: 14 -.2 79 122 .27 7 24 64 19 6.1
 Carcass: 25.0 -.36 .41 -.04 .98 158 87
 Pasture Sire: CLRS Jericho 336J from 6/20 to 7/30/24

Adj BW	Adj WW
103	709



Hook's Full Figures 11F
Five Star Jackson J10
KBHR F316
Leachman Cadillac L025A
ES G18
ES E78

- This is a rare opportunity to buy a Five Star Jackson with a calf at side. I don't know of many that have sold more or less of this quality
- Built a lot like her granddam, E78. Adam showed E78 many years ago, never won the banner but every judge had her towards the top end of the class and would comment they would take a whole herd of females like this "Cow Power"
- #4 WW heifer that ratioed 119 with big WW & YW EPD's

164 ES L98

CE	BW	WW	YW	ADG	MCE	Milk	MWW	Stay	DOC	CW	YG	Marb	BF	REA	API	TI
16	-0.7	86	133	0.29	6	24	66	19	11.8	36.8	-0.33	0.54	-0.039	1.09	160	93
20		20	25				30	15			15	30		4	15	15

REG#4257883
BD: 3/16/23**Homo Black**
Homo Polled
5/8 SM 3/8 AN

Adj BW	Adj WW
70	551

EGL Cinched 116F**ES H100****G A R Sure Fire****TJ 22X****BCLR Cash Flow C820****ES B19**

AI Sire: Hooks Galileo 210G on 5/10/24 • Due 2/15/25
 Est PM EPDs: 16 -1.5 88 136 .30 9 31 74 19 15.8
 Carcass: 43.1 -.25 .88 -.04 .91 189 105
 Pasture Sire: CLRS Jericho 336J from 6/20 to 7/30/24

- She's not going to be the biggest heifer in the pen but dang she's got the right parts & pieces to make a whale of a cow
- Her granddam, B19, has longevity with a whopping WW ratio of 113 on nine calves
- Her Galileo calf will possess some of the newest & hottest genetics in the breed. They are topping sales across the country



ES K58, Maternal Sister

**165 ES L72**

CE	BW	WW	YW	ADG	MCE	Milk	MWW	Stay	DOC	CW	YG	Marb	BF	REA	API	TI
8	2.6	88	134	0.28	5	21	65	23	7.6	43.1	-0.22	0.38	-0.045	0.76	155	88
		20	25	30				2		15		25			20	25

REG#4257935
BD: 3/12/23**Homo Black**
Homo Polled
Purebred SM

Adj BW	Adj WW
90	591

CLRS Johnny Walker 1049J**ES F14****CLRS Guardian 317G****Hook's Yuma 49Y****CCR Santa Fe 9349Z****ES D107****LOT 165A: HEIFER CALF AT SIDE**

Sire: GW Medicine Man 200K • BD: 1/27/25 • BW: 67 • Tattoo: N1
 Est PM EPDs: 13 -.6 87 136 .31 7 24 68 19 11.5
 Carcass: 49.7 -.24 .62 -.05 .88 167 96

- Long sided, larger frame heifer here
- Her dam, F14, has brought home five calves with a WW ratio of 105
- Her dam has always got high scores for her udder structure which is typical with any having ES Loaded in their pedigree



ES KF14, Maternal Brother



166 ES L107REG#4257965 • BD: 3/18/23 • **Red Homo Polled Purebred SM**

CE	BW	WW	YW	ADG	MCE	Milk	MWW	Stay	DOC	CW	YG	Marb	BF	REA	API	TI
11	2.3	93	155	0.39	3	25	71	6	14.2	32.6	-0.41	0.25	-0.078	0.96	125	91
		15	4	2		35	15		25					30		20

Adj BW	Adj WW
80	637

W/C Bankroll 811D
W/C Fort Knox 609F
K-LER Dolly's Queen 609D
WS All Aboard B80

ES F83

ES B34

- Holy smokes folks, the old cliché we shouldn't be selling this one holds true here. She's a full sister to ES Autumn J113 who is making her mark at the K-Ler Ranch in MN
- Seth Kaehler bought the pick of our open heifers at the One and Only sale in Denver in 2022 for \$15,000 and selected Paul Grace's favorite heifer that year, ES Autumn J113
- With her black features (which I think is pretty cool and unique) it looks like she wallowed through a mud hole on her way to the picture pen. In my visual appraisal, I marked her awfully good

ES Autumn
J113, Full
Sister



166

167 ES L126

CE	BW	WW	YW	ADG	MCE	Milk	MWW	Stay	DOC	CW	YG	Marb	BF	REA	API	TI
8	4.6	75	111	0.23	2	19	57	16	8.6	24.1	-0.30	0.16	-0.035	0.85	109	68
											25			20		

REG#4257900
BD: 4/4/23

Red
Homo Polled
3/4 SM 1/4 AR

Adj BW	Adj WW
91	557

CDI Authority 77X

ES Y60

NF Trump S582

CDI Ms Crocket 88T

WS Beef King W107

EIR U219

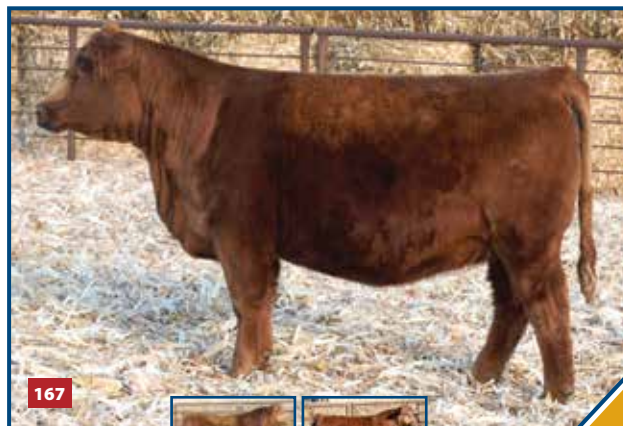
AI Sire: **ES Jack Red LG11** on 6/15/24 • Due 3/23/25

Est PM EPDs: 13 1.3 79 119 .25 6 25 64 16 11.6

Carcass: 29.1 -.25 .42 -.03 .80 147 86

Pasture Sire: CLRS Jericho 336J from 6/20 to 7/30/24

- Her dam, Y60, was a ranch favorite here at ES. Her calves weren't the largest framed bulls, much like L126, but they were sound, thick and deep bodied
- A true testament was her three full brothers that sold from 2021-2023 going to the great herds of Kyle Stern, Allen Reiker and Kevin Fenton
- I can't think of a better mating than ES Jack Red, especially if keeping replacement heifers is a priority



167

ES KY60, Full Brother



ES JY60, Full Brother

168 ES L104

CE	BW	WW	YW	ADG	MCE	Milk	MWW	Stay	DOC	CW	YG	Marb	BF	REA	API	TI
10	0.9	85	123	0.24	8	28	70	16	11.2	35.8	-0.25	0.36	-0.038	0.82	132	84
		25				20	20				35			25		

REG#4257921
BD: 3/17/23

Red Baldy
Homo Polled
3/4 SM 3/16 AN 1/16 AR

Adj BW	Adj WW
88	653

HSF Cardinal 133G

ES H132

IR Imperial D948

HSF Miss Sky 59S 64Z

W/C Lock Down 206Z

ES B21

AI Sire: **ES Jack Red LG11** on 5/8/24 • Due 2/13/25

Est PM EPDs: 14 -.5 84 125 .26 9 29 71 16 12.9

Carcass: 35.4 -.23 .53 -.03 .80 158 93

Pasture Sire: CLRS Jericho 336J from 6/20 to 7/30/24

- I think the picture kind of speaks for itself, she's a pretty cool, fancy red baldy
- For a sassy looking baldy, she has a sweet attitude with a WW ratio of 110
- We'll know before the sale whether it's a solid red calf or a red baldy. If it's a baldy, you'll be the 1st to own an ES Jack Red baldy calf

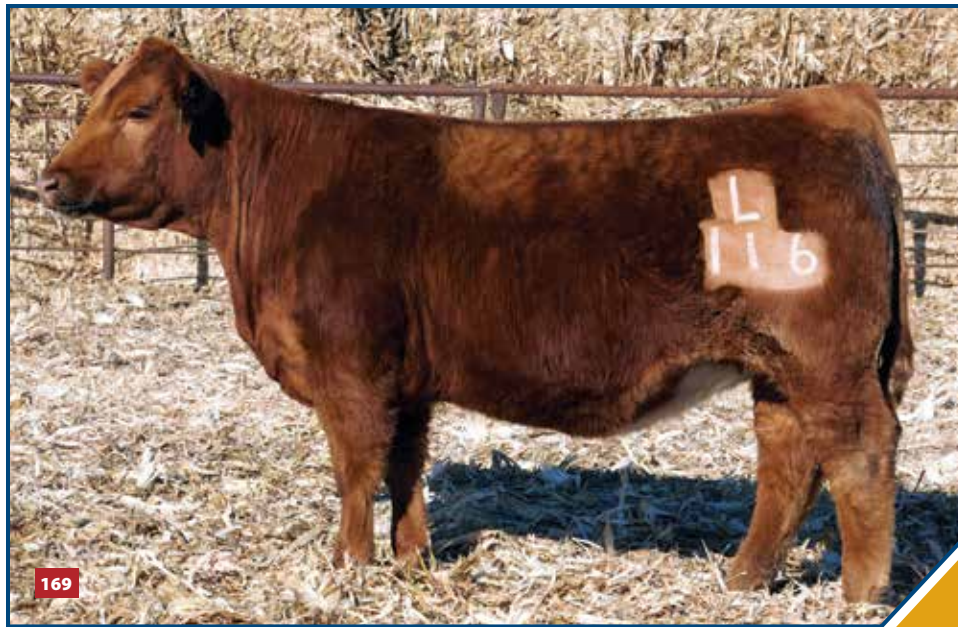


168

169 ES L116

REG#4257963 • BD: 3/19/23 • Red Homo Polled Purebred SM

CE	BW	WW	YW	ADG	MCE	Milk	MWW	Stay	DOC	CW	YG	Marb	BF	REA	API	TI
11	0.8	83	125	0.26	5	26	68	19	18.0	32.4	-0.39	0.34	-0.038	1.23	150	88
		35	35			30	30	20	2			25		4	25	30



Adj BW	Adj WW
70	572

IR Imperial D948
 HSF Cardinal 133G
 HSF Miss Sky 59S 64Z
 CDI Abundance 391C
 ES G160
 ES B34

- She's a moderate-sized heifer with a great top line and a nice rear leg
- Check out the supporting picture of her maternal sister that sold in 2023
- We chose to breed her to CCR Bedrock for a black calf, but the choice is yours from here on out



ES J41, Maternal Sister

170 ES L125

CE	BW	WW	YW	ADG	MCE	Milk	MWW	Stay	DOC	CW	YG	Marb	BF	REA	API	TI
9	1.9	94	145	0.32	7	25	72	17	13.3	46.3	-0.34	0.38	-0.087	0.87	138	90
		10	15	25			15	30		20	15		4	20		25

REG#4257855
BD: 4/4/23Red
Homo Polled
3/4 SM 1/4 AR

Adj BW	Adj WW
80	610

9 Mile Abundance 7507 CDI Abundance 391C
 ES E5 CDI Ms Xpectation 80Z
 WS Beef King W107
 EIRT212

AI Sire: DCR Mr Killian K70 on 5/7/24 • Due 2/12/25
 Est PM EPDs: 14 -.6 93 139 .29 9 26 73 16 13.2
 Carcass: 44.3 -.38 .41 -.08 1.05 159 97
 Pasture Sire: CLRS Jericho 336J from 6/20 to 7/30/24

- I had a lot of high marks on this gal on my visual appraisal. She definitely checks the boxes
- The Abundance blood line on the top side of the pedigree is a bull we used several years ago, and the commercial guys loved the bulls. There was a little more to them and they crossed great on Red Angus cows
- She's the only heifer in the sale bred to the DCR Mr Killian bull. I had to use him when Mike Traxinger told me he puts nice poopers on the cattle. Takes me back to my high school days

**171 ES L92**

CE	BW	WW	YW	ADG	MCE	Milk	MWW	Stay	DOC	CW	YG	Marb	BF	REA	API	TI
5	2.7	88	141	0.33	3	25	69	17	13.6	42.0	-0.15	0.52	-0.029	0.65	138	88
		15	15	20			25	25	35	30		30				30

REG#4258004
BD: 3/15/23Red
Homo Polled
1/2 SM 1/2 AR

Adj BW	Adj WW
102	628

9 Mile Abundance 7507 CDI Abundance 391C
 EIR H200 CDI Ms Xpectation 80Z
 HXC Conquest 4405P
 EIR F210

AI Sire: ES Jack Red LG11 on 5/7/24 • Due 2/12/25
 Est PM EPDs: 11 .4 86 134 .30 7 28 70 16 14.1
 Carcass: 37.9 -.18 .61 -.03 .72 155 93
 Pasture Sire: CLRS Jericho 336J from 6/20 to 7/30/24

- It's no secret we don't have many straight Red Angus cows anymore but the ones we have are awfully nice, like her dam, H200 who has gotten a 9 on udder score every year
- Her maternal sister was gorgeous last year that Rod Hurlbut purchased and at the time he said she was for his grandkids. I'll have to follow up on that
- Cool opportunity to get in on the ground floor of the ES Jack Red calves. He was our high selling red bull last year going to KBHR in North Dakota. Go Jacks!!!



EIR K200, Maternal Sister

172 ES L120

CE	BW	WW	YW	ADG	MCE	Milk	MWW	Stay	DOC	CW	YG	Marb	BF	REA	API	TI
19	-4.7	62	96	0.21	12	29	60	13	17.4	32.9	-0.15	0.62	-0.033	0.50	155	85
3	3				2	15			5			20			20	

REG#4257910
BD: 3/27/23

Red
Homo Polled
1/2 SM 1/2 AR

Adj BW	Adj WW
63	540

Five Star Jackson J10

EIR X204

LOT 172A: BULL CALF AT SIDE

Sire: Redhill Burley 99J • BD: 2/9/25 • BW: 79 • Tattoo: NL 120
Est PM EPDs: 16 -2.0 79 118 .25 9 29 68 17 12.5
Carcass: 34.0 -.32 .53 -.06 .83 165 93

Hook's Full Figures 11F

KBHR F316

Milk Crk Cub 722

EIR U201

- She comes in a package that offers a little more frame in the red division
- If you're wondering what the potential of her Redhill Burley calf is, just take a look in the bull division – he is getting it done
- Talk about longevity, her dam is in the herd yet at 15 years of age

**173 ES L79**

CE	BW	WW	YW	ADG	MCE	Milk	MWW	Stay	DOC	CW	YG	Marb	BF	REA	API	TI
18	-3.9	63	99	0.23	11	27	58	19	18.3	17.7	-0.05	0.44	0.000	0.27	153	79
10	5				4	25		15	3						25	

REG#4257980
BD: 3/13/23

Red
Homo Polled
1/2 SM 1/2 AR

Adj BW	Adj WW
72	519

KS Net Income H433

EIR H203

AI Sire: Redhill Burley 99J on 5/9/24 • Due 2/14/25

Est PM EPDs: 15 -1.6 79 119 .25 8 28 67 20 13.0

Carcass: 26.6 -.27 .45 -.04 .72 165 90

Pasture Sire: CLRS Jericho 336J from 6/20 to 7/30/24

Hook's Full Figures 11F

KS Ethyl E183

Bieber Make Mimi 7249

EIR F204

- L79 is a product of combining low BW and high maternal and has a nice docility
- KS Net Income has been a nice sire group for calving ease in the bull division for the last couple of years
- Her dam, H203, has earned some excellent udder scores the last three years, even getting a perfect 10 one time (not easy to come by)



Eberspacher
ENTERPRISES INC.

2904 Co Rd 6, Marshall, MN 56258

FIRST CLASS MAIL:
TIME DATED MATERIAL!

Presorted
First Class
US Postage
PAID
SlateGroup



E Eichacker Simmentals *And* *K* Angus

Bull & Female Sale
JOIN US! **FRIDAY, MARCH 7TH • 1:00 PM**
AT THE EICHACKER SIMMENTAL FARM • SALEM, SD

2

0

2

5